

Babylon the Great Redux Transcription

[Daniel 2:11] “And the matter that the sovereign is asking is difficult, and there is no other who is able to reveal it to the sovereign except the elahin, whose dwelling is not with flesh.”



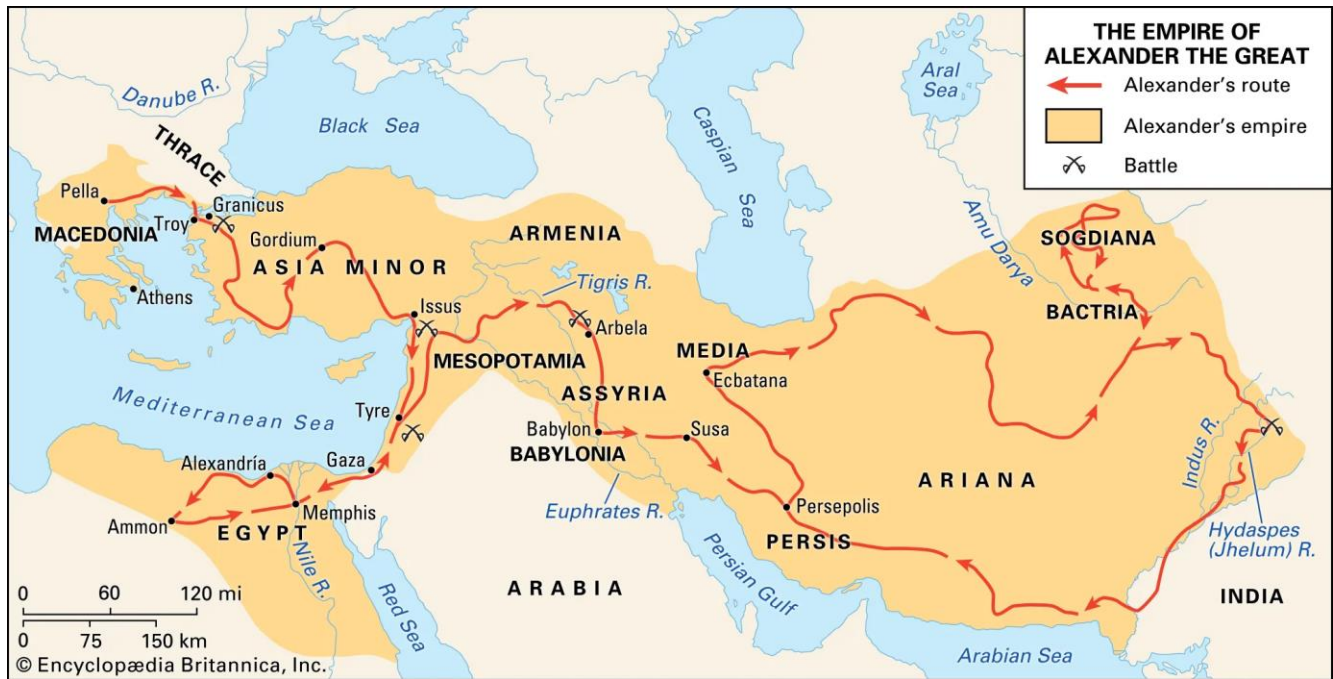
[Daniel 2:28] But there is an Elah in the heavens who reveals secrets, and He has made known to Sovereign Nebukadnetstsar what is to be in the latter days. Your dream, and the visions of your head upon your bed, were these:

[Daniel 2:32-33] “This image’s head was of fine gold, its chest and arms of silver, its belly and thighs of bronze, its legs of iron, its feet partly of iron and partly of clay.

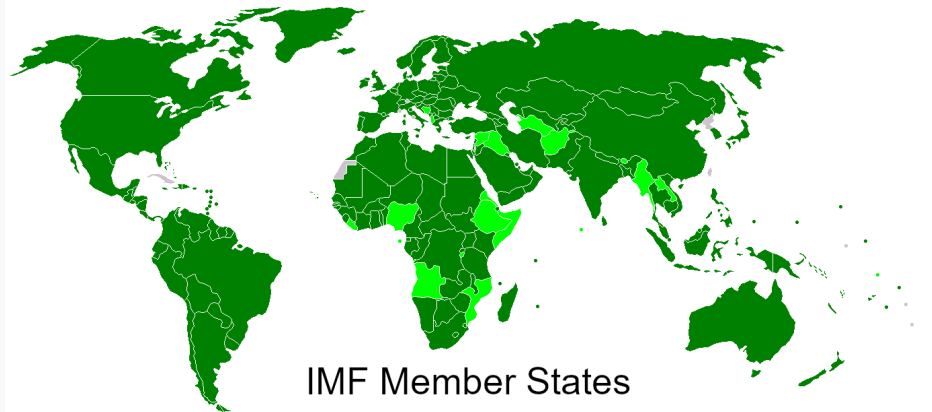
[Daniel 12:4] “But you, Dani’el, hide the words, and seal the book until the time of the end. Many shall diligently search and knowledge shall increase.”

If Daniel was told to hide the meanings of his visions, then why do Christians assume they have the right interpretation? (Hint: They don’t.) The meaning of the vision can only be understood in the greater context of Scripture.

[Daniel 2:37-40] “You, O sovereign, are a sovereign of sovereigns. For the Elah of the heavens has given you a reign, power, and strength, and preciousness, and wherever the children of men dwell, or the beasts of the field and the birds of the heavens, He has given them into your hand, and has made you ruler over them all. You are the head of gold. And after you rises up another reign lower than yours, and another third reign of bronze that rules over all the earth. And the fourth reign is as strong as iron, because iron crushes and shatters all. So, like iron that breaks in pieces, it crushes and breaks all these.



Is that the whole earth?



The central hub of the global antediluvian civilization was located in what is now called the Middle East. After Adam and Eve were expelled from the Garden of Eden, they built a settlement nearby.

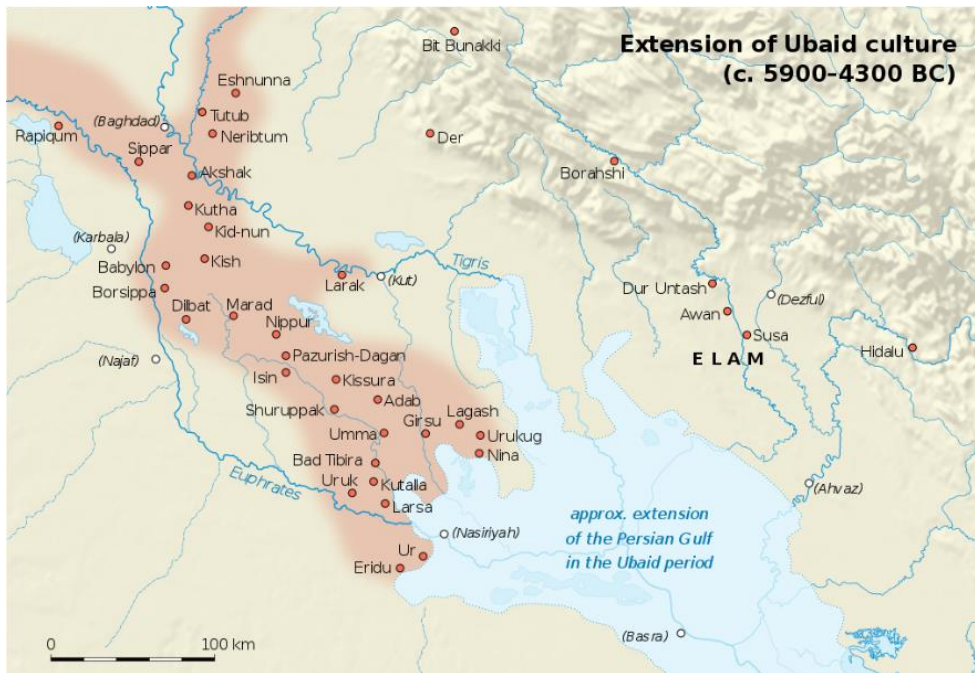


Tel al-Ubaid 1



Tel al-Ubaid 2

Their descendants built the cities of Sumer on the coast of the Persian Gulf and extended their influence northward into Mesopotamia, while the descendants of Cain inhabited the lands to the East.



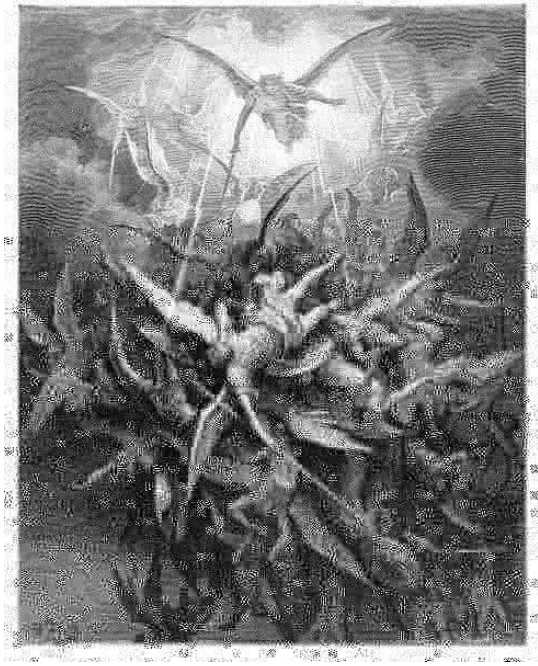
The earliest settlements were simple habitations and bore the names of the men who built them. The first town was Nun-Ki ('master of earth'), also called Eridu ('mighty place'). Adam was given dominion over the whole earth. This right of rulership was passed down to his offspring in succeeding generations through Seth.

When the Watchers descended from the heavens on Mt. Hermon, they taught men the arts of metallurgy and of war.



Eridu fell to Bad-tibira (the ‘fortress of smiths’), which then fell to Larak, which fell to Sippar.





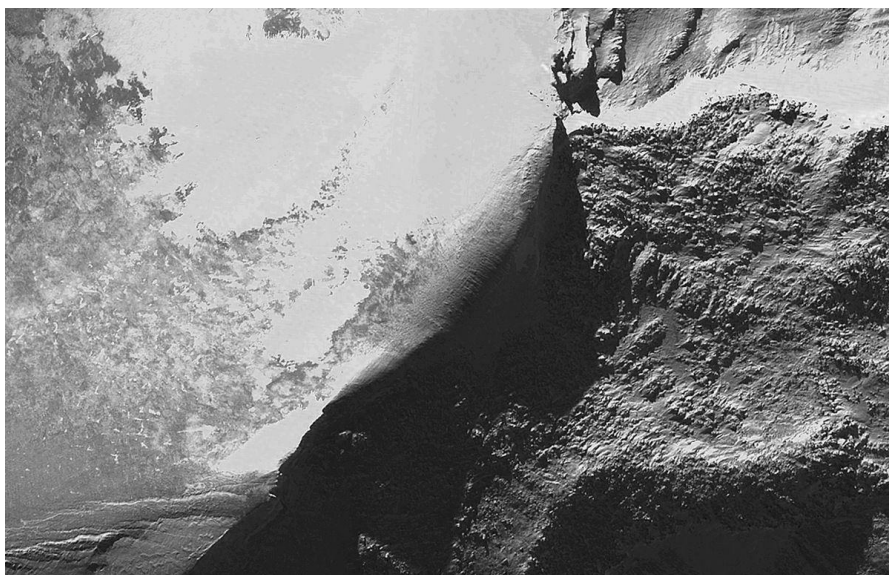
God saw that the world had become evil, and intervened. The Watchers were deposed.

Sippar fell in the time of the priest Methuselah who was of the line of Seth, and the center of power reverted back to his son Lamech ('priest') of Shuruppak ('healing place').

Ubara-Tutu = Lamech

Utnapishtim = Noah

The whole world was destroyed, except for Lamech's son Noah who found favor in the eyes of God.



Adam's dominion was passed through Noah and his descendants through the patriarchs of the Bible, to one man who is lord of all.



After the Flood, the Hamitic tribe of Kish founded a new kingdom upon the ruins of the Sumerian civilization. The kingship over Sumer passed from city to city until the whole of Mesopotamia was conquered by Sargon of Kish, King of Akkad (Babylon).

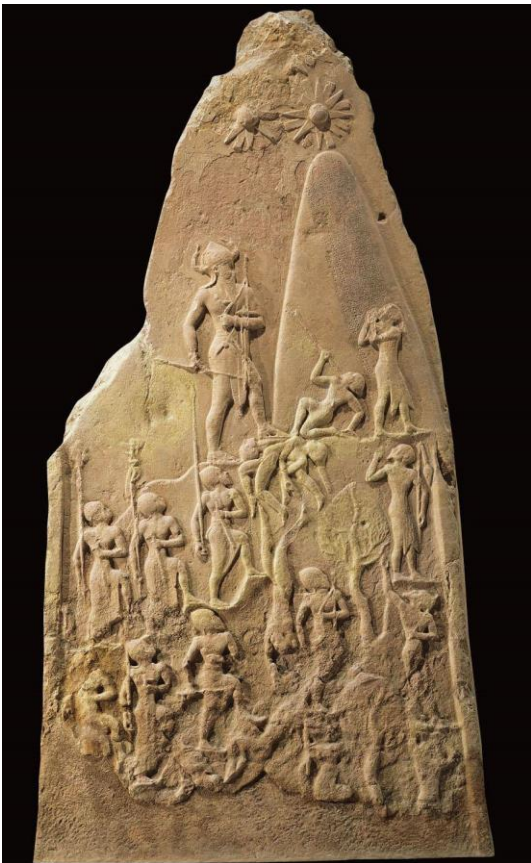


[Genesis 10:8-12] And Kush brought forth Nimrod, he began to be a mighty one on the earth. He was a mighty hunter before יהוה, therefore it is said, “Like Nimrod the mighty hunter before יהוה.” And the beginning of his reign was Babel, and Ereḵ, and Akkad, and Kalnēh, in the land of Shin’ar. From that land he went to Ashshur and built Ninewēh, and Reḥoboth Ir, and Kelah, and Resen between Ninewēh and Kelah, the great city.

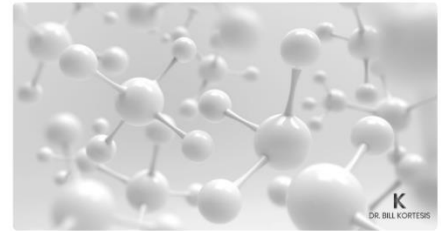
Nimrod means ‘rebellion’ in Hebrew. He hunted the Semites to near extinction.



Nimrod is the prototype for those whose chief aim is to learn the secret of eternal life in defiance of God, who has ordained that the being that sins shall die.







Is NanoTech Paving The Way For Immortality?



Bill Kortesis, MD, FACS

Bridging the Gap Between Finance, Technology, & Medicine | Aesthetic & MedTech Venture Advisor | Owner & Managing Partner of H/K/B Cosmetic Surgery

Published Jan 28, 2020

+ Follow

The idea of humans becoming immortal through technological advancements sounds a little ridiculous — but if you look at the behind-the-scenes science of it all, it's really quite incredible to see the medical advancements that are happening.

Nimrod's rebellion is the creation of the antediluvian world government of the Watchers. The Luciferian religions are celebrations of the reigns of Lucifer and Nimrod. The term "Babylon" is used in prophetic scripture to denote the one-world ecclesiastical, financial and political ambitions of the so-called Illuminati.

Babylon = New World Order



European Parliament, Strasbourg, France



Tower of Babel, by Bruegel (c. 1563)



Top view of the European Parliament



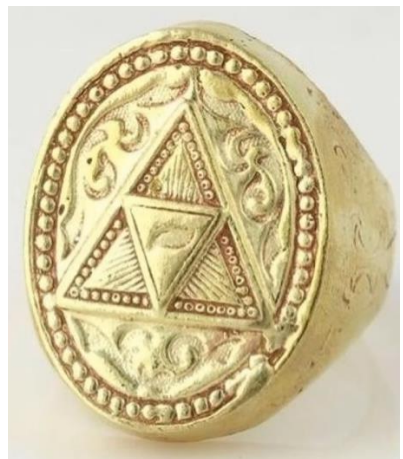
This image represents the historical succession of civilizations which ruled over Palestine from the time of Daniel to the time of Israel's dispersion, and also the present time. Christians universally misinterpret the vision because they have followed the lead of the Jews, who claim Daniel was a false prophet.

The Persian king Cyrus conquered Babylon and married a Jewess named Ishtar. The Persians only ruled over Palestine for 34 years. Jews know this ('Ab. Zarah 86).

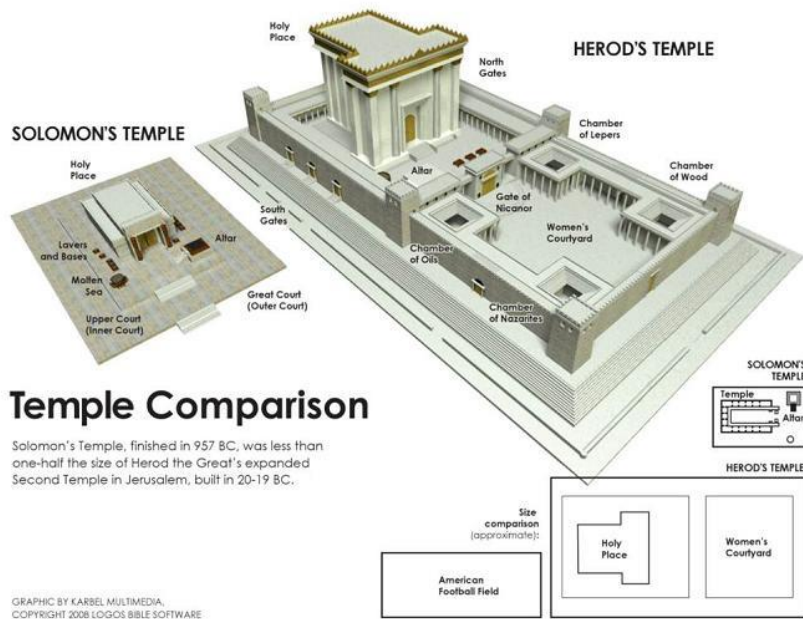
Unlike the other metals in the vision, bronze is an alloy, a composite of two metals. Israel and Judea were governed by the Sadducees and the Pharisees, respectively, between the rule of the Persians and the Greeks.

All of the empires in the vision were descended from the original Babylonians, including the Jews who were Persian colonists. The word 'Pharisee' means 'Persian.'

The Jewish religion is the product of the Babylonian Talmud. It was Zerubbabel ('Seed of Babel') who rebuilt the temple in Jerusalem.

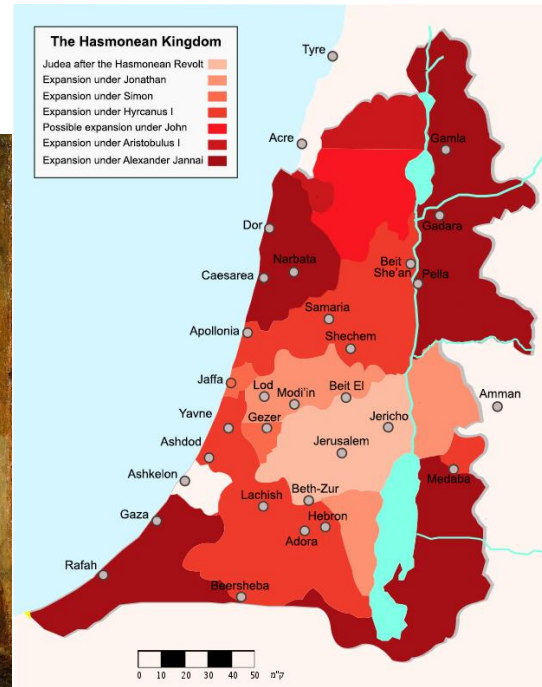


King Herod was an Idumean (Edomite); he appointed a high priest from Babylon.



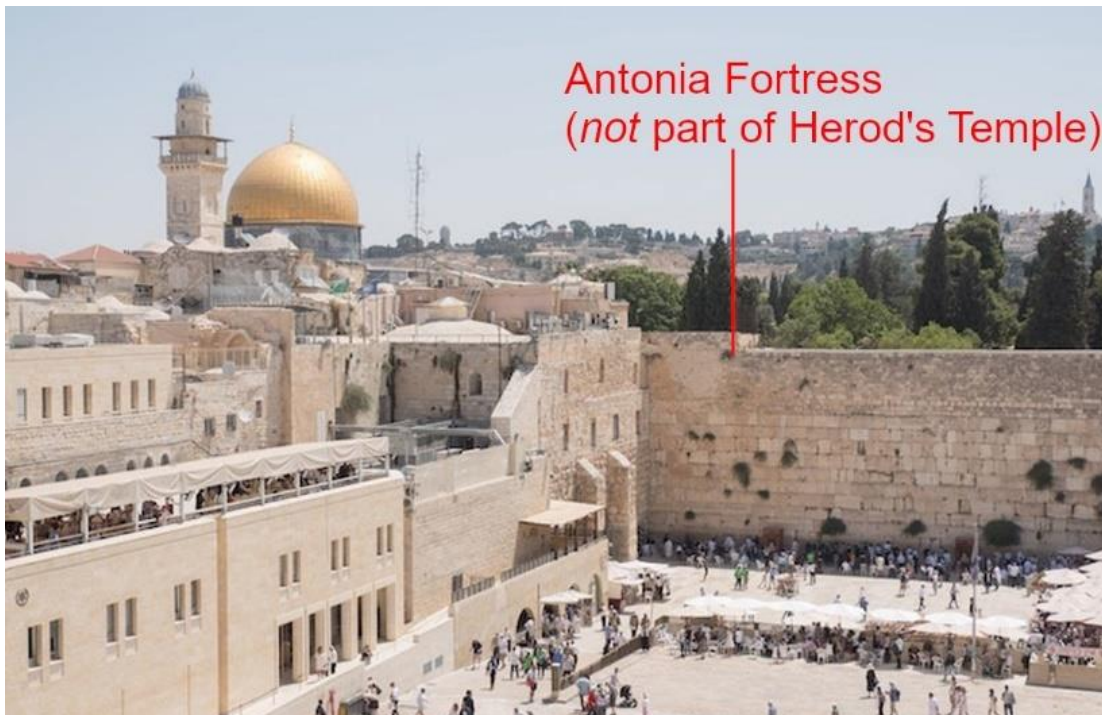
When Alexander of Macedon arrived at Jerusalem during his conquest of the Persian Empire, the Jews opened the gates and welcomed him into the city unopposed. The Jews were Hellenized and came under the rule first of the Seleucid Empire and then the (Greek) Hasmonean Dynasty.





The Hasmonean Kingdom

Palestine was incorporated into the Roman province of Syria by the conquest of Mark Antony, and fully annexed after the suppression of the Judean Revolt, whereupon the Babylonian priesthood was relocated to Rome.





“Yet, as you saw the feet and toes, partly of potter’s clay and partly of iron, the reign is to be divided. But some of the strength of the iron is to be in it, because you saw the iron mixed with muddy clay.”

“And as you saw iron mixed with muddy clay, they are mixing themselves with the seed of men, but they are not clinging to each other, even as iron does not mix with clay.”



Pergamum (a.k.a. Troy) was the homeland of the Roman civilization according to its founding myth. Rome and Pergamum formed a union in 133 BC.

This is the altar of Zeus from Pergamum, now housed in a museum in Berlin.





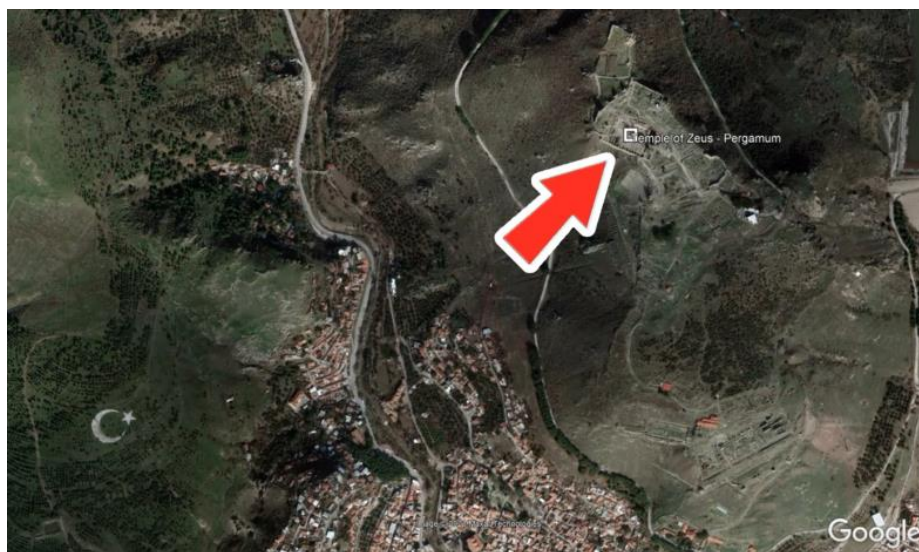
[Revelation 2:13] I know your works, and where you dwell, **where the throne of Satan is**. And you hold fast to My Name, and did not deny the belief in Me, even in the days in which Antipas was My trustworthy witness, who was killed near you, **where Satan dwells**.



Dardania, home of Aeneas



Temple of Zeus, Pergamum, where Satan dwells



Temple of Zeus – Pergamum



Municipio I / Atheneum, Rome, Italy



Figure 1



Figure 2

Arch of Constantine, the Temple of Vesta, and the Mithraeum connect to the Atheneum/Municipio and connect to the Piazza del Popolo in Figure 1, which is the apex or the “eye” of a “pyramid” in Figure 2.

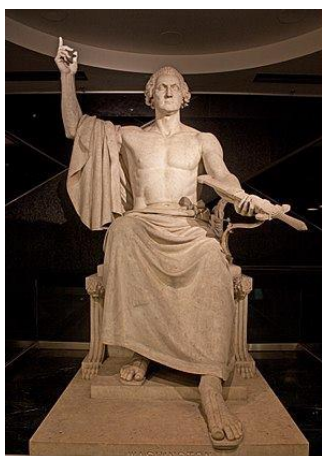
“You were looking on, until a stone was cut out without hands, and it smote the image on its feet of iron and clay, and broke them in pieces.”

[Matthew 16:18] And I also say to you that you are Kēpha [Peter], and on this **rock** I shall build My assembly, and the gates of the grave shall not overcome it.

“Then the iron, the clay, the bronze, the silver, and the gold were crushed together, and became like **chaff** from the summer **threshing-floors**. And the wind took them away so that **no trace** of them **was found**. And the stone that smote the image became a great mountain and filled all the earth.”

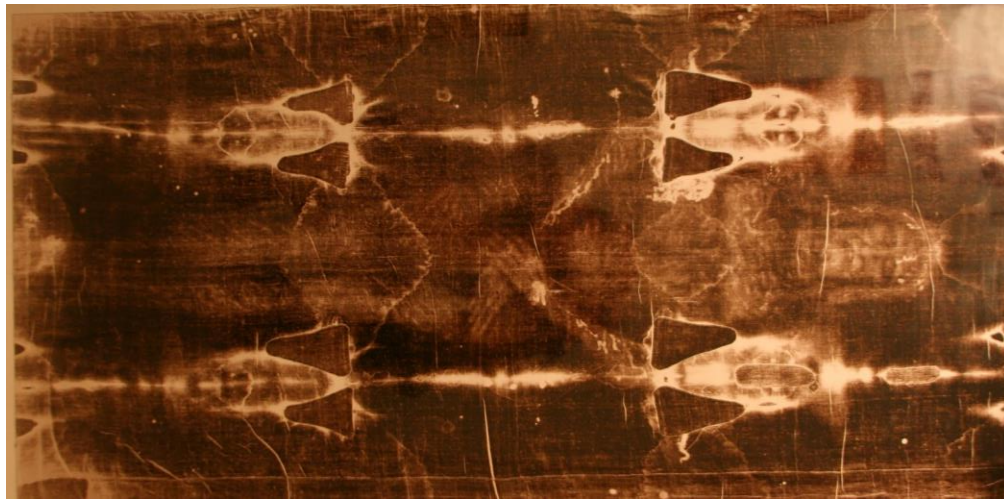
[Matthew 3:12] “His winnowing fork is in His hand, and He shall thoroughly cleanse His **threshing-floor**, and gather His wheat into the storehouse, but the **chaff** He shall burn with unquenchable fire.”

[Revelation 16:20] And every island [**nation**] fled away, and the mountains [**governments**] were not found.





“And in the days of these sovereigns the Elah of the heavens shall set up a reign which shall never be destroyed, nor the reign pass on to other people – it crushes and puts to an end all these reigns, and it shall stand forever.”



[2 Samuel 7:16] “And your house and your reign are to be steadfast forever before you – your throne is established forever.”

[Psalm 110:4] יהוה has sworn and does not relent, “You are a priest forever according to the order of Malkitsedeq.”



“Because you saw that the stone was cut out of the mountain without hands, and that it crushed the iron, the bronze, the clay, the silver, and the gold, the great Elah has made known to the sovereign what shall be after this. And the dream is true, and its interpretation is trustworthy.”

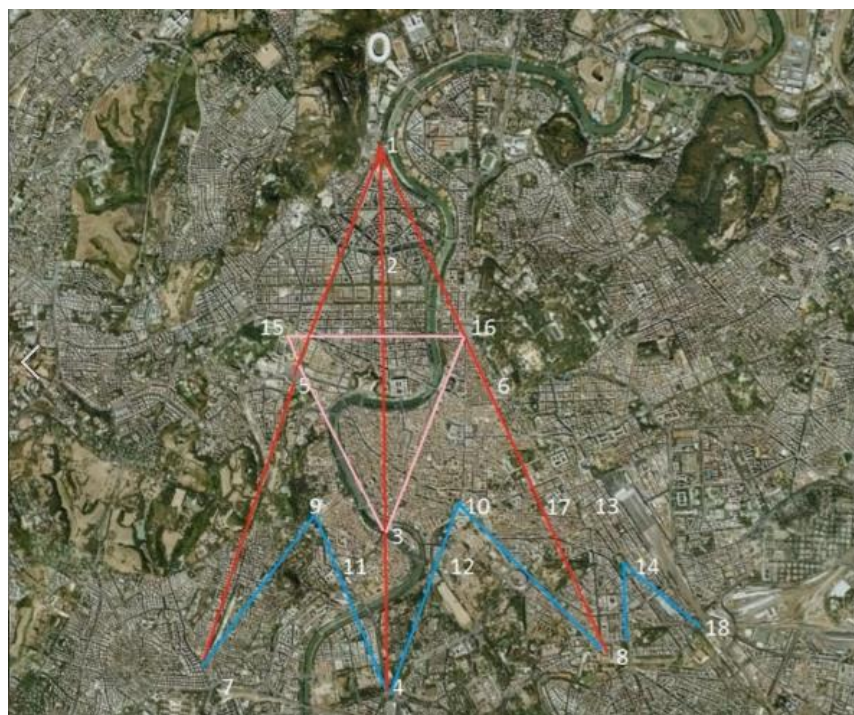


Christ



Antichrist

Freemasonry is the self-described legacy of the builders of the Temple of Solomon and the Temple of Zerubabbel. The cities of the world have been built according to instructions delivered by oracles (or, demons). Rather than explain what this means, here’s what it looks like on a small scale:

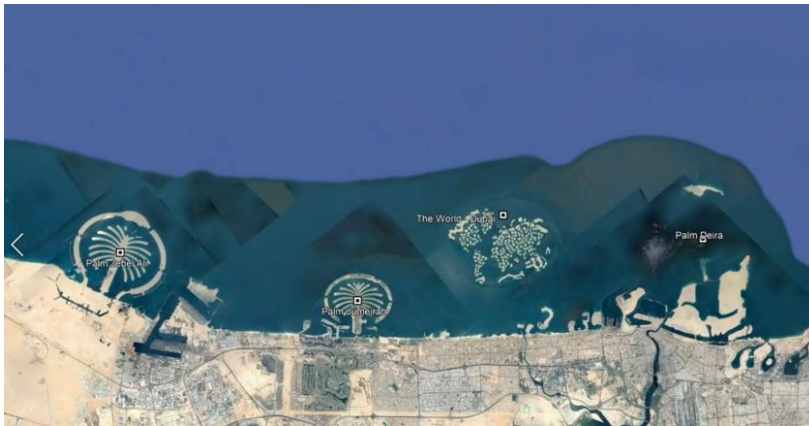
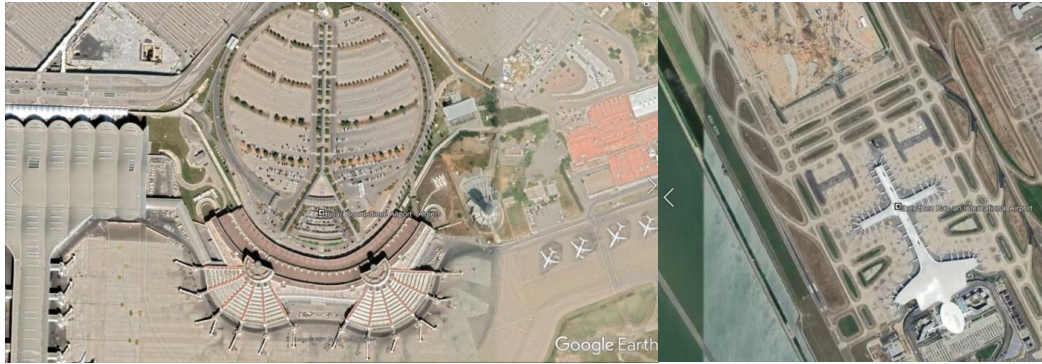


Rome, Italy

The main sites:

- 1 - Giardino Plaza
- 2 - Mazzini Plaza
- 3 - Garibaldi Point
- 4 - Pyramid of Cestius / Ostian Gate
- 5 - St. Peter Plaza / Basilica of St. Peter
- 6 - Spanish Plaza
- 7 - Trastevere Station
- 8 - Basilica of St. John in Lateran / Lateran Palace
- 9 - Botanical Gardens
- 10 - Venetian Plaza / Athenaeum
- 11 - Ministry of Public Education
- 12 - Church of St. Mary in Cosmedin / Mithraeum
- 13 - Basilica of St. Mary Major
- 14 - Magic Door / Victor Immanuel II Plaza
- 15 - Revolution Plaza
- 16 - Papal Plaza / Flamines Gate
- 17 - Trajan's Column
- 18 - Major Gate

The entire city is constructed this way. The building plan is nothing short of monumental. These images were only meant to be seen from the air. The pyramids of the world were originally designed as landing platforms.



Elon Musk
@elonmusk

Aliens built the pyramids obv

12:14 AM · Jul 31, 2020 · Twitter for iPhone

68K Retweets 16.2K Quote Tweets 526.8K Likes

[Genesis 11:4] And they said, “Come, let us build ourselves a city, and a tower whose top is in the heavens, and make a name for ourselves, lest we be scattered over all the face of the earth.”

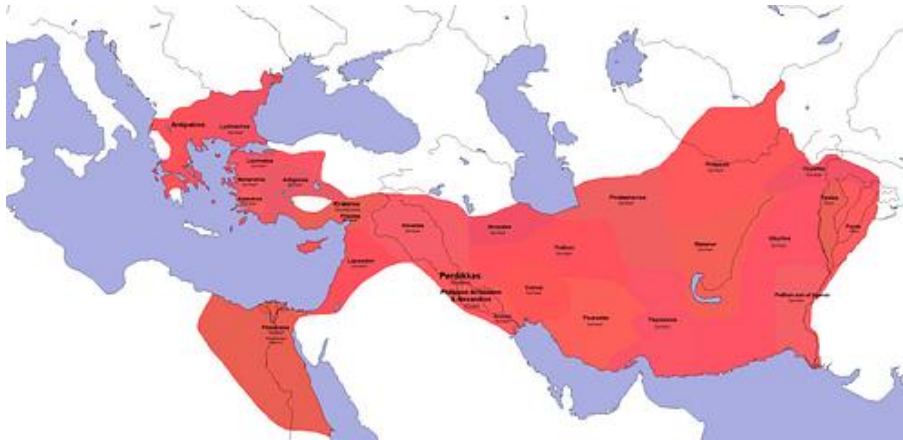
[Genesis 11:9] That is why its name was called Babel, because there יהוה confused the language of all the earth, and from there יהוה scattered them over the face of all the earth.



Is that the whole earth?



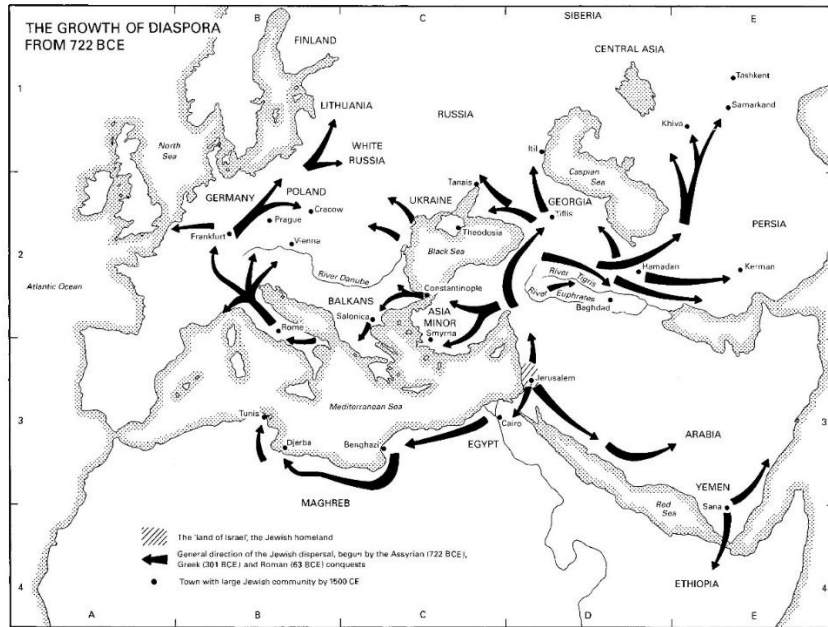
Is that the whole earth?



Is that the whole earth?



Is that the whole earth?



The Growth of Diaspora from 722 BC



NWO WORLD MAP

"All we need is the right major crisis and the nations will accept the New World Order"

~ David Rockefeller, 1994



One thing they all have in common is that they are all political Zionists.



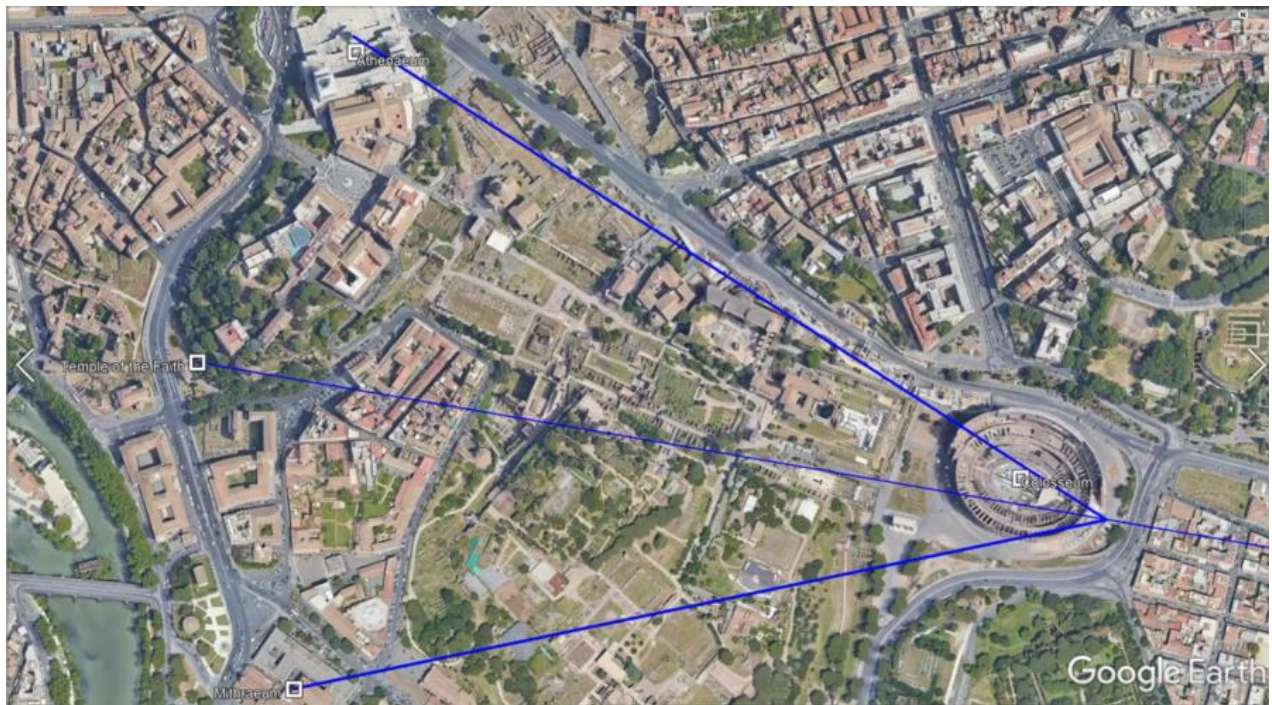
Barack Obama



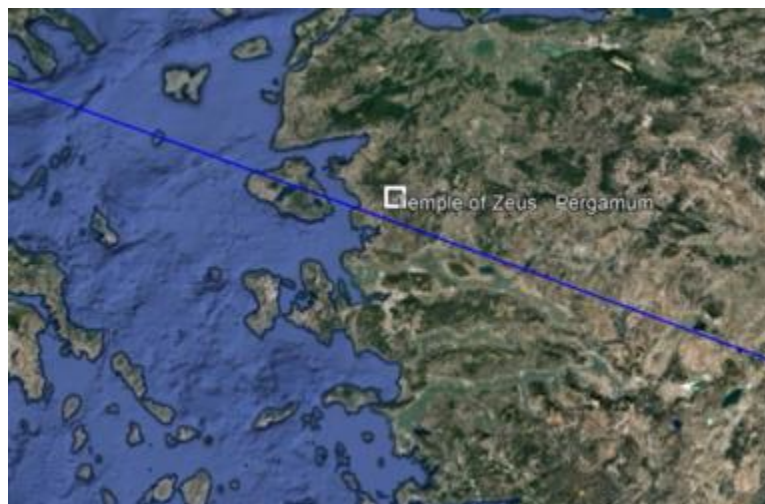
Here's an example of what the building plan looks like on a larger scale.

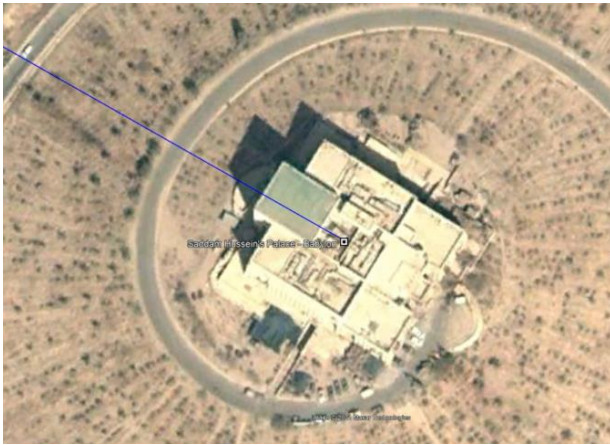
These are three most important locations in Rome: Athenaeum, Mithraeum, and the Colosseum in Rome (shown on Google Maps in the video).

The midpoint between the Mithraeum and the Athenaeum was called the Sacred Area. The perpendicular bisector of the pyramid formed by these two points with the area of the Colosseum lies at a heading of roughly 98 degrees.



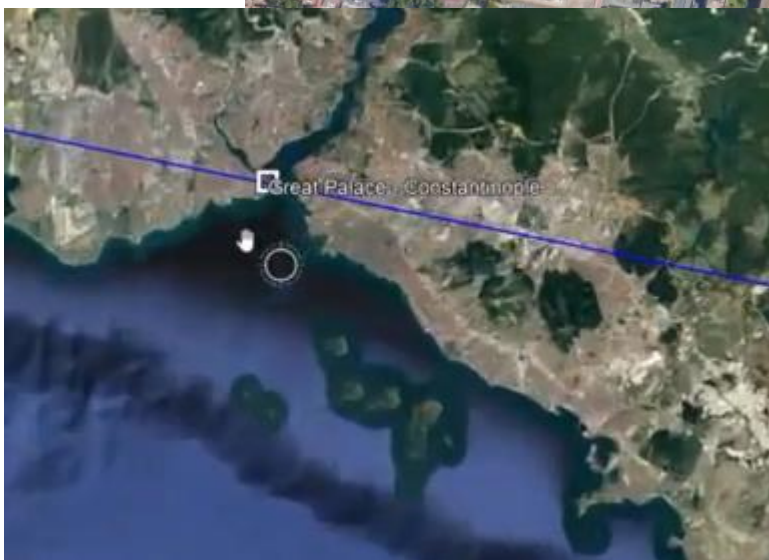
The pyramid points all the way to Saddam Hussein's Palace – Babylon, and the line cuts through Pergamum where the Temple of Zeus is located.



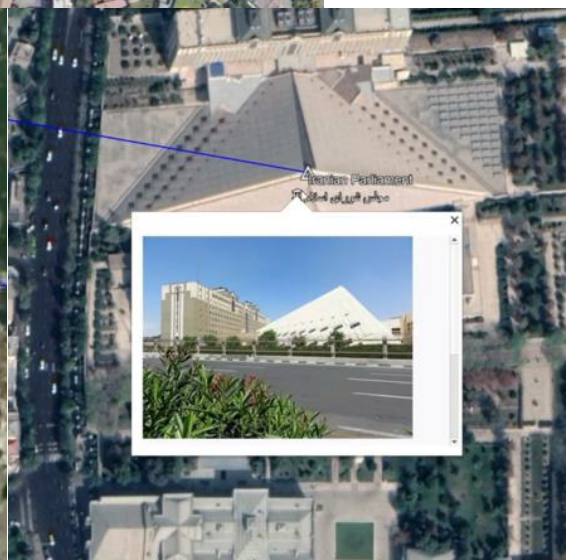


Saddam Hussein's Palace – Babylon

The Vatican Basilica of St. Peter points to the Iranian Parliament building in a straight line, which the line cuts through the Great Palace of Constantinople.



Great Palace – Constantinople



Iranian Parliament

This isn't just intentional. It's a millennia-old obsession. This kind of precision is unearthly.

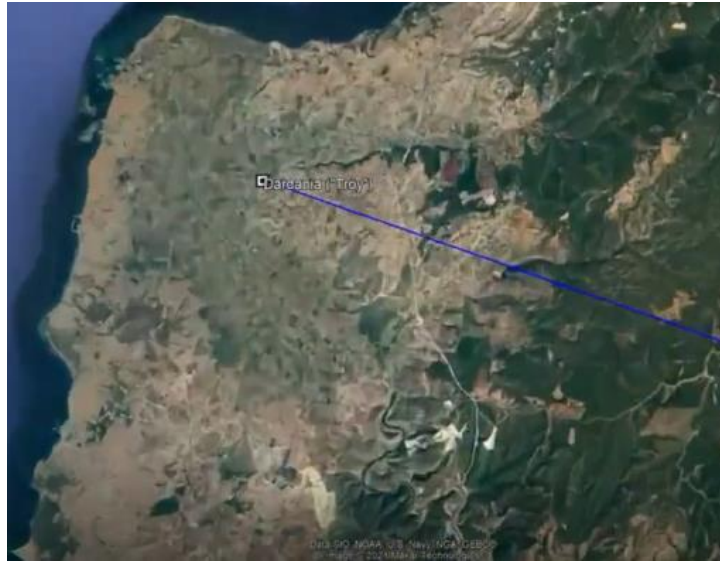
The ruins of the Babylonian Homera are right next to Saddam's Palace. Its coordinates are precisely $32^{\circ}32'32.32''$ N.



The terminals at the Baghdad International Airport take the form of three triangles that point to certain locations.



The middle triangle points to Dardania.



The line cuts through Mount Ida, where the Roman Magna Mater was.

The bottom triangle points to Jebel al-Lawz, the real location of Mt. Horeb or Sinai, where Moses met God, and received the Torah (it is traditionally believed that this location was on Mt. Musa in the Sinai Peninsula, which is wrong).



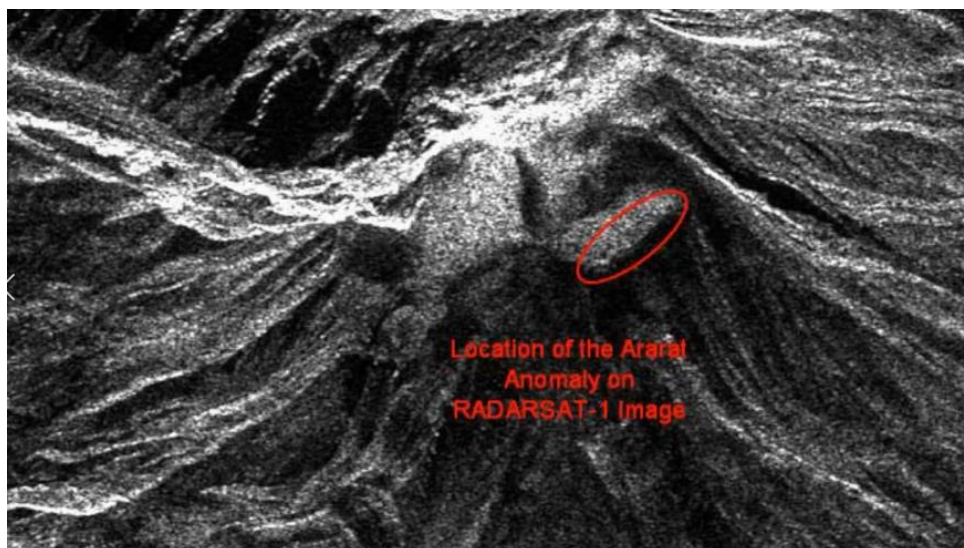
Jebel al-Lawz (Mt. Sinai)



The top triangle of the airport points to the location of the remains of Noah's Ark on Mt. Ararat.



Noah's Ark – Mt. Ararat



And they try to tell us these people believed the earth was flat.

Now let's look at Rome.

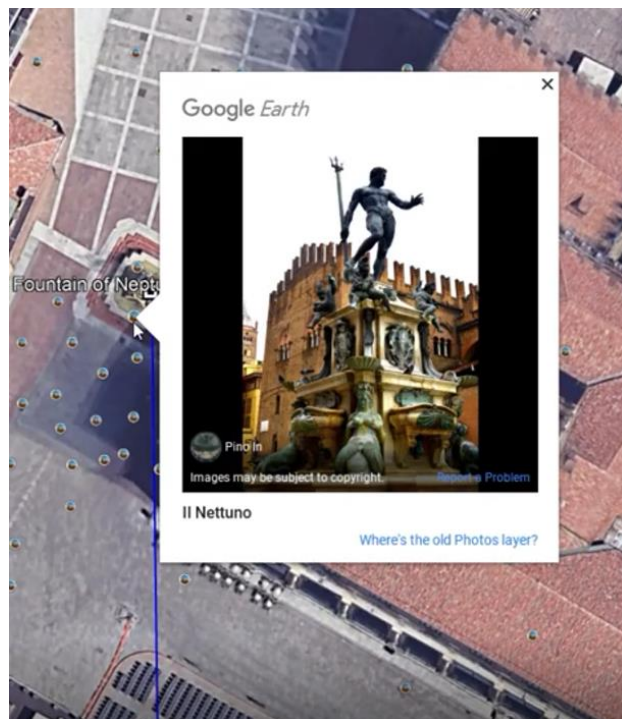
The Mithraeum and the Arch of Constantine make straight lines that connect at the Athenaeum, which points to the Piazza del Popolo. The Via Flaminia connected Rome to Arminium (Rimini).



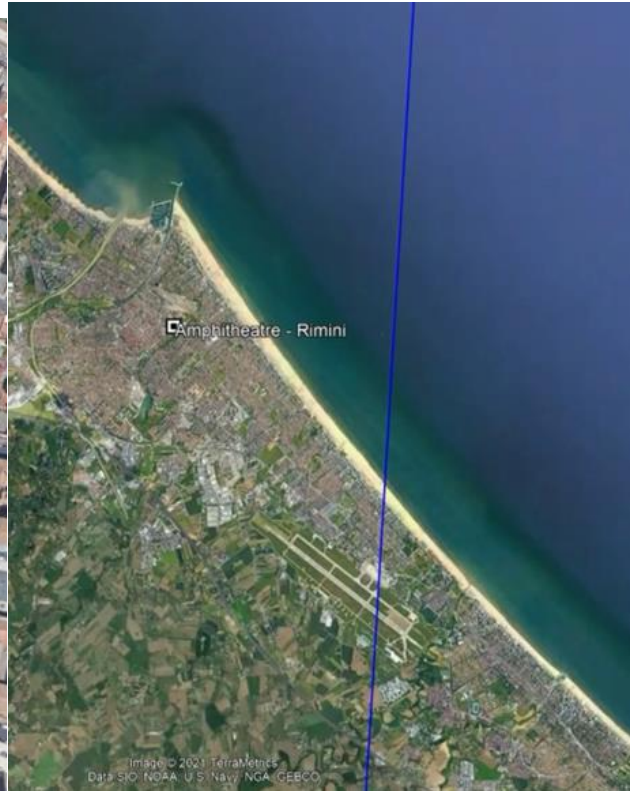
All roads lead to Rome.



This points to the Fountain of Neptune in Bologna. Bologna was the imperial seat of the Holy Roman Empire in Italy. The line cuts through Arminium (Rimini).

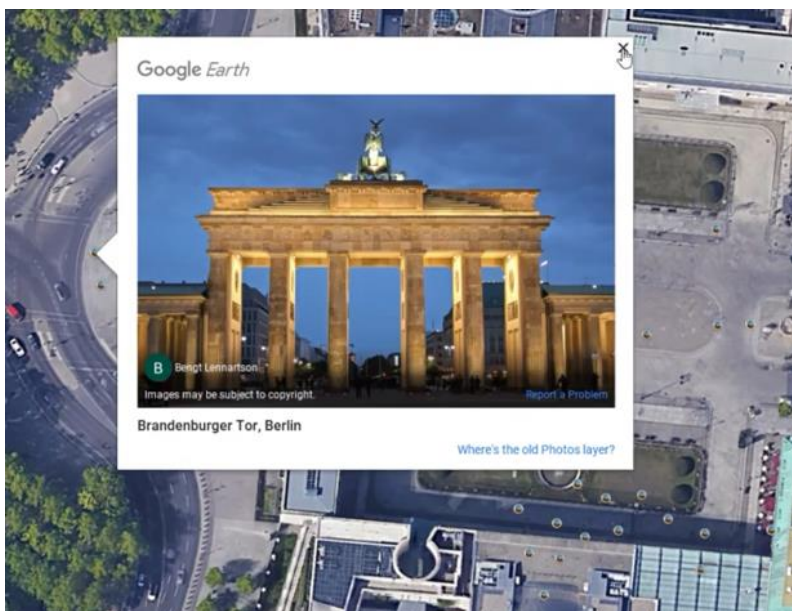


Neptune is the god of waters. (“Waters” = *peoples* in Scripture.)



Berlin is the capital of Germany, and the most populous city in the European Union. The line ends at another Fountain of Neptune in Berlin.

The triangle to the left of the fountain points to the Brandenberger Tor, which is connected by a road to the Siegessaule.





Siegestsäule

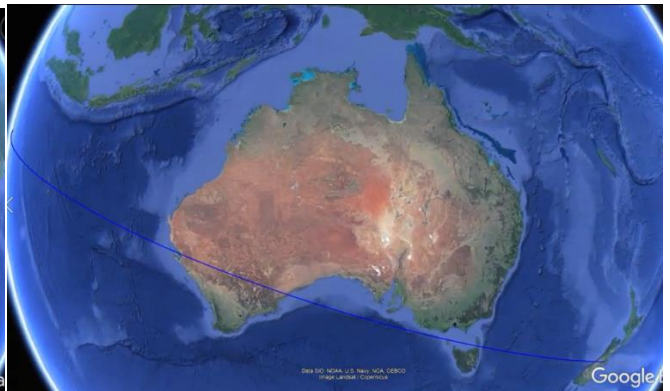
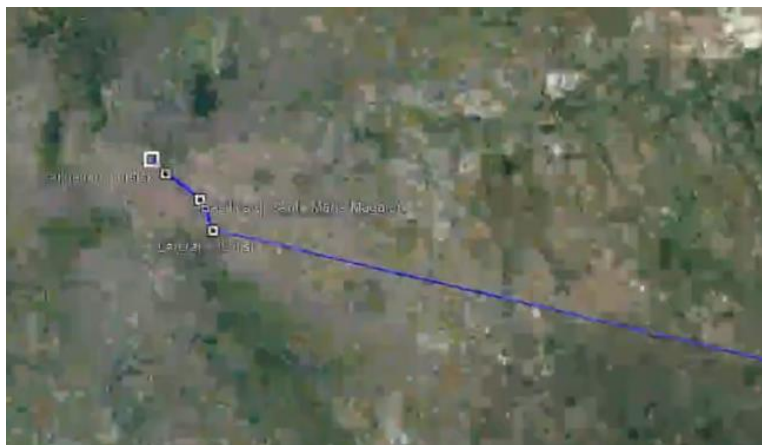


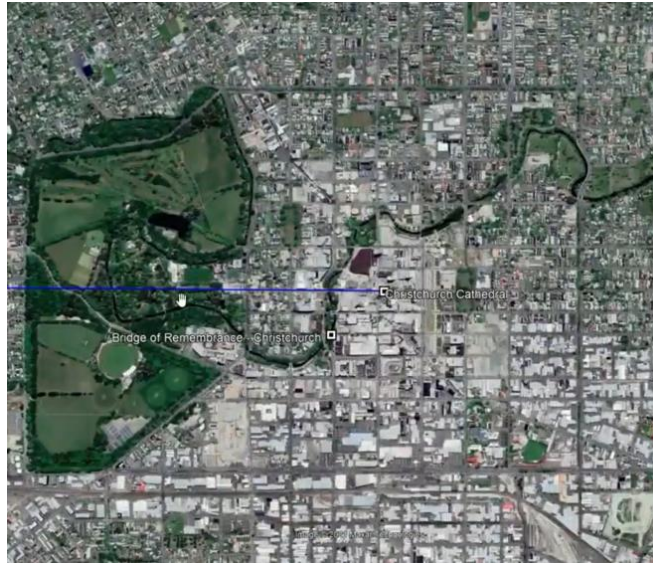
The Via Appia connected Rome to Brundisium (Brindisi).



Piazza del Popolo, Sallustian Obelisk, Basilica de Santa Maria, Lateran Obelisk

The Via Traiana was a newer northern route of the Via Appia.

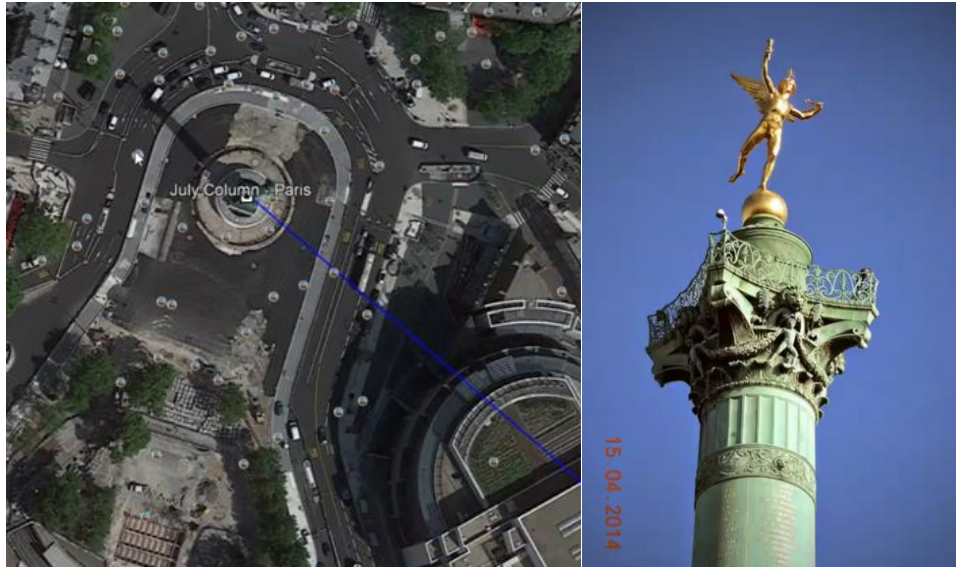




Christchurch Cathedral, Christchurch, New Zealand

Christchurch is the oldest city in New Zealand. It was built on a grid pattern around Cathedral Square. As you can see, the points are aligned on both ends, implying coordination.





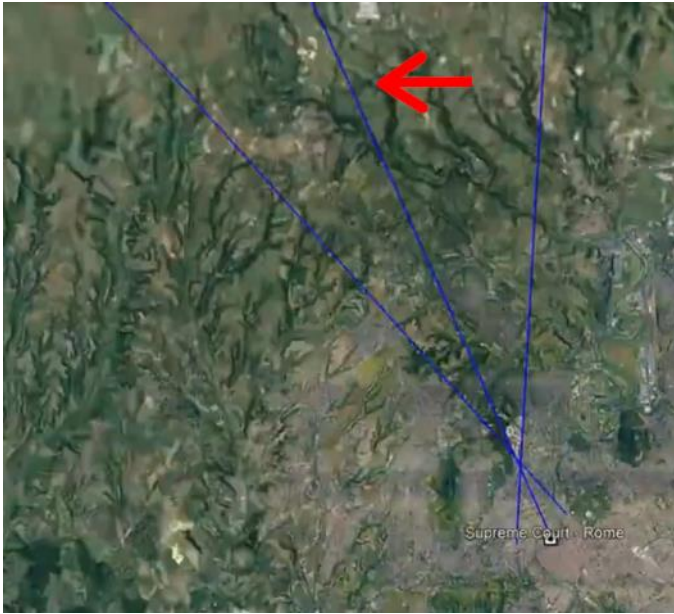
July Column, Paris, France

Paris is the capital and most populous city of France.



Supreme Court of Rome

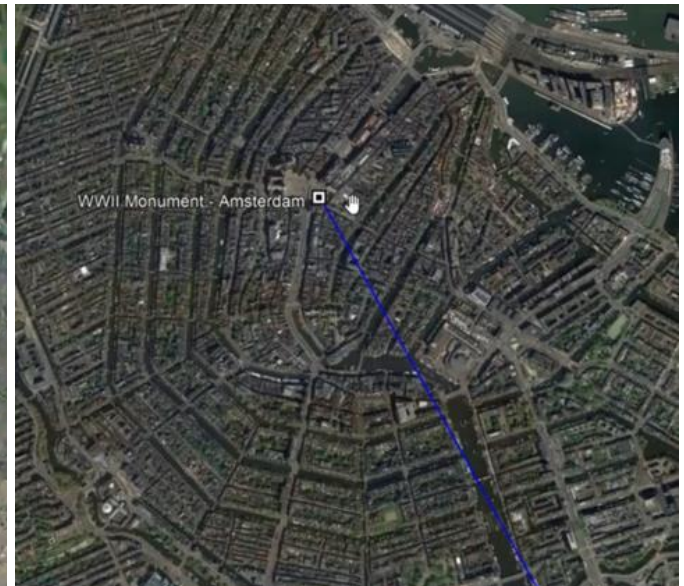
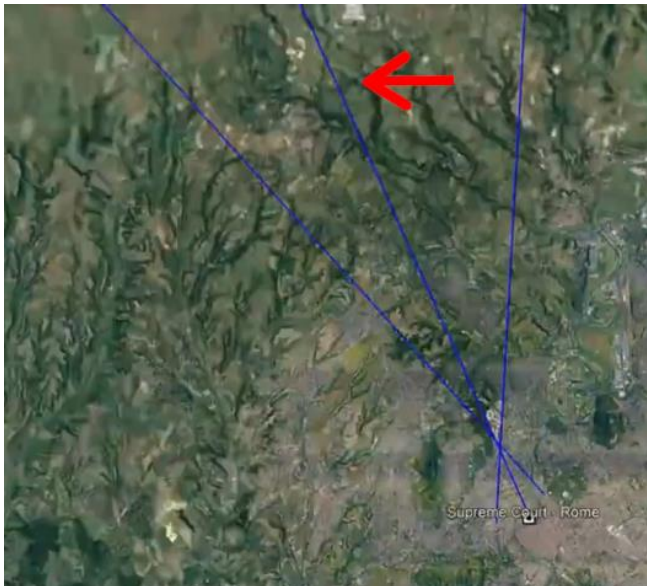
Italians call their Palace of Justice *Il Palazzacio* (Bad Palace) due to its corruption.



Aachen Cathedral, Germany

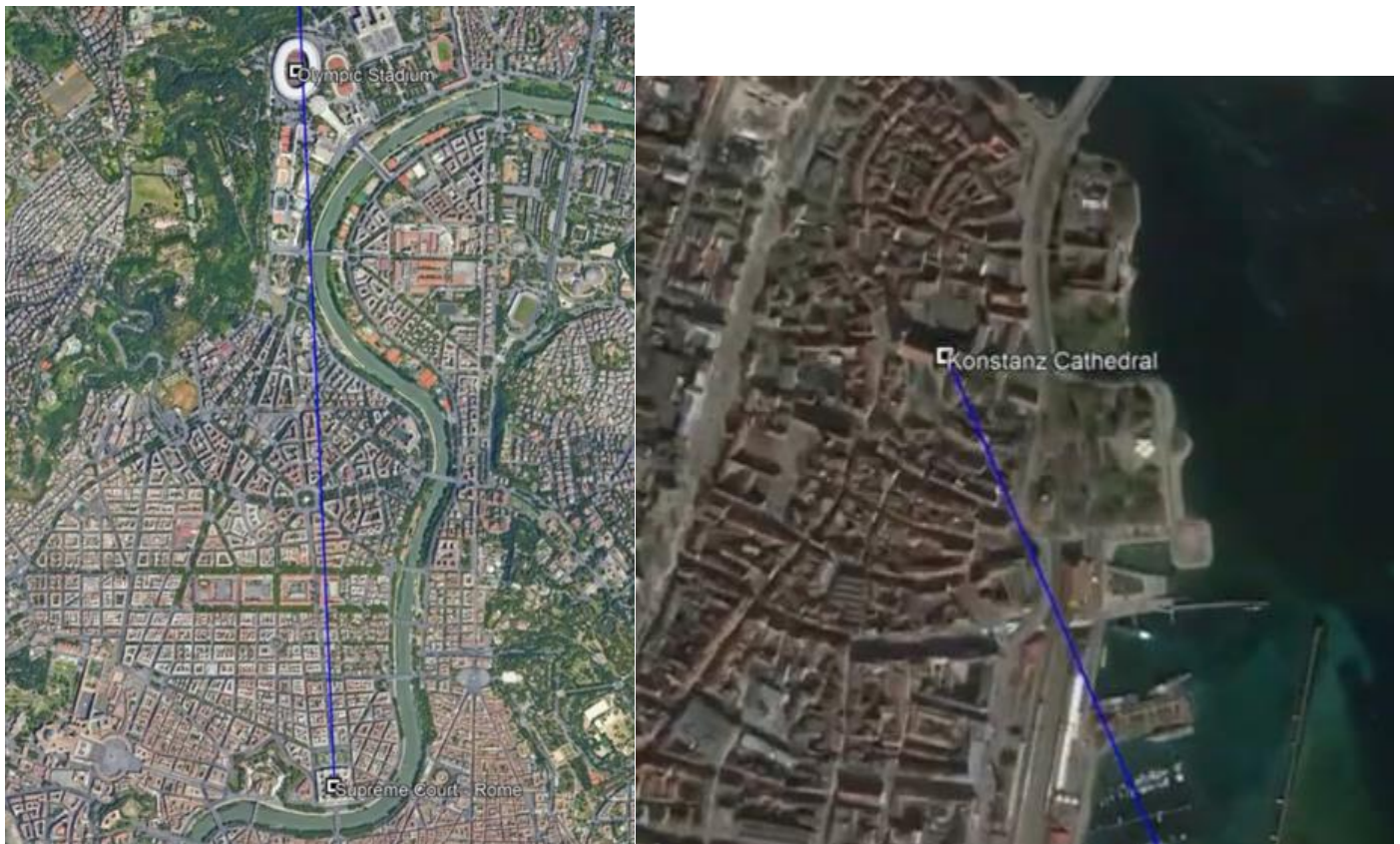
Aachen was the *de facto* capital of the Holy Roman Empire under Charlemagne.

Amsterdam is the capital and most populous city of the Netherlands. The same line originating from *Il Palazzacio* also connects to the World War II monument in Amsterdam.





A line originating from the Supreme Court of Rome connects to Konstanz Cathedral, and cuts through the Olympic Stadium.





Originating from the Piazza del Popolo, a line cuts through the Olympic Stadium and leads to Metz, France, where Metz Synagogue and the Church of St. Clement – Metz are located.





Church of Clement, Metz Synagogue



Hôtel de Police

Metz was the capital of the Merovingian Austrasia and of the Frankish Lotharingia (Lorraine).



The Metz Cathedral points to the Templar Church from the bottom of the “cross.”



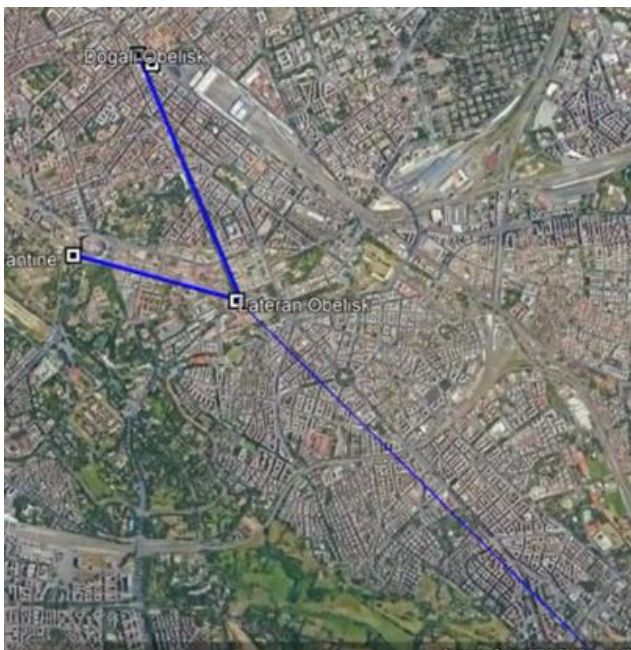
The Templar Church points to the Governor's Palace to the south.

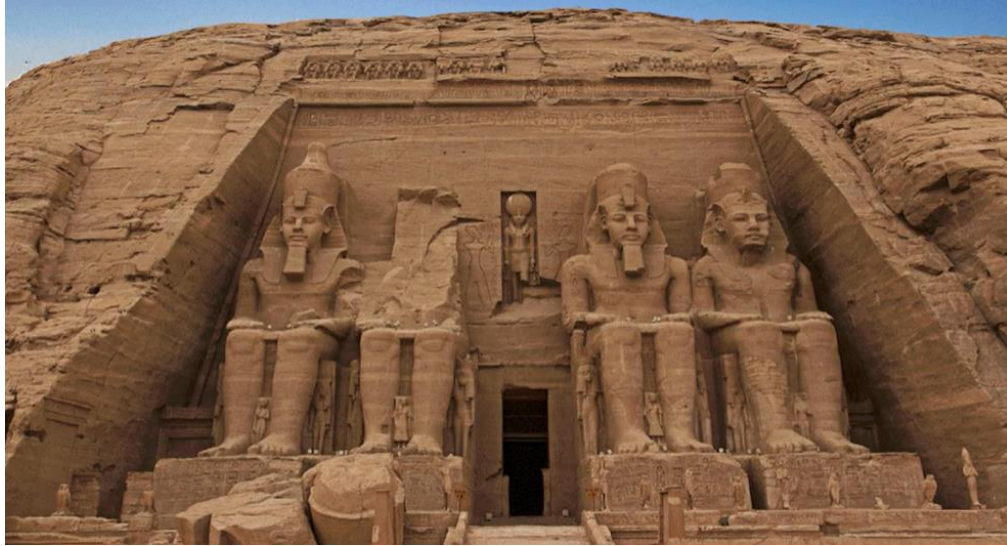


The Governor's Palace of Metz makes a straight line to the north to Gothic-Romanesque Chapel Church in Brussels, which is the burial site of the painter Pieter Bruegel the Elder. Brussels is the capital and the most populous city in Belgium.



Back in Rome, the Piazza della Repubblica and the Arch of Constantine both connect to the Lateran Obelisk to point to the Temple of Ramesses II in Egypt.



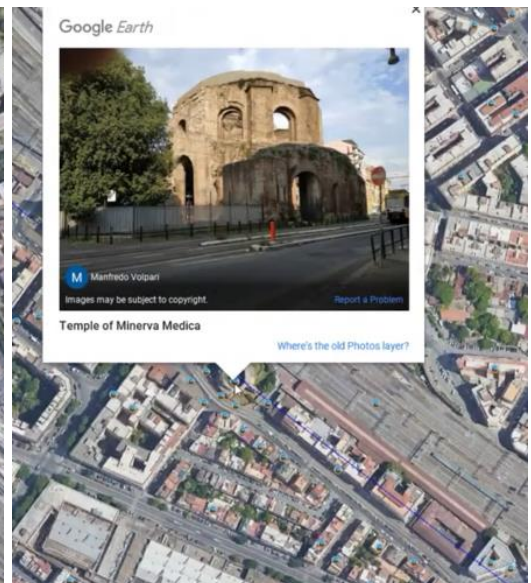


This is just a sample. We could do this forever. The Illuminati have been building for over 5000 years. Or, rather, they have been employing unwitting slaves to build for them. This is the product of all those efforts.

Also, we are only looking at royal palaces, cathedrals, public venues, national monuments, government buildings, etc., not random locations of no cultural or historical import. Clearly this is not mere coincidence, but a concerted effort. It spans all continents, all nations, and all major cities. They never actually stopped building the Tower of Babel. They just haven't reached the heavens.



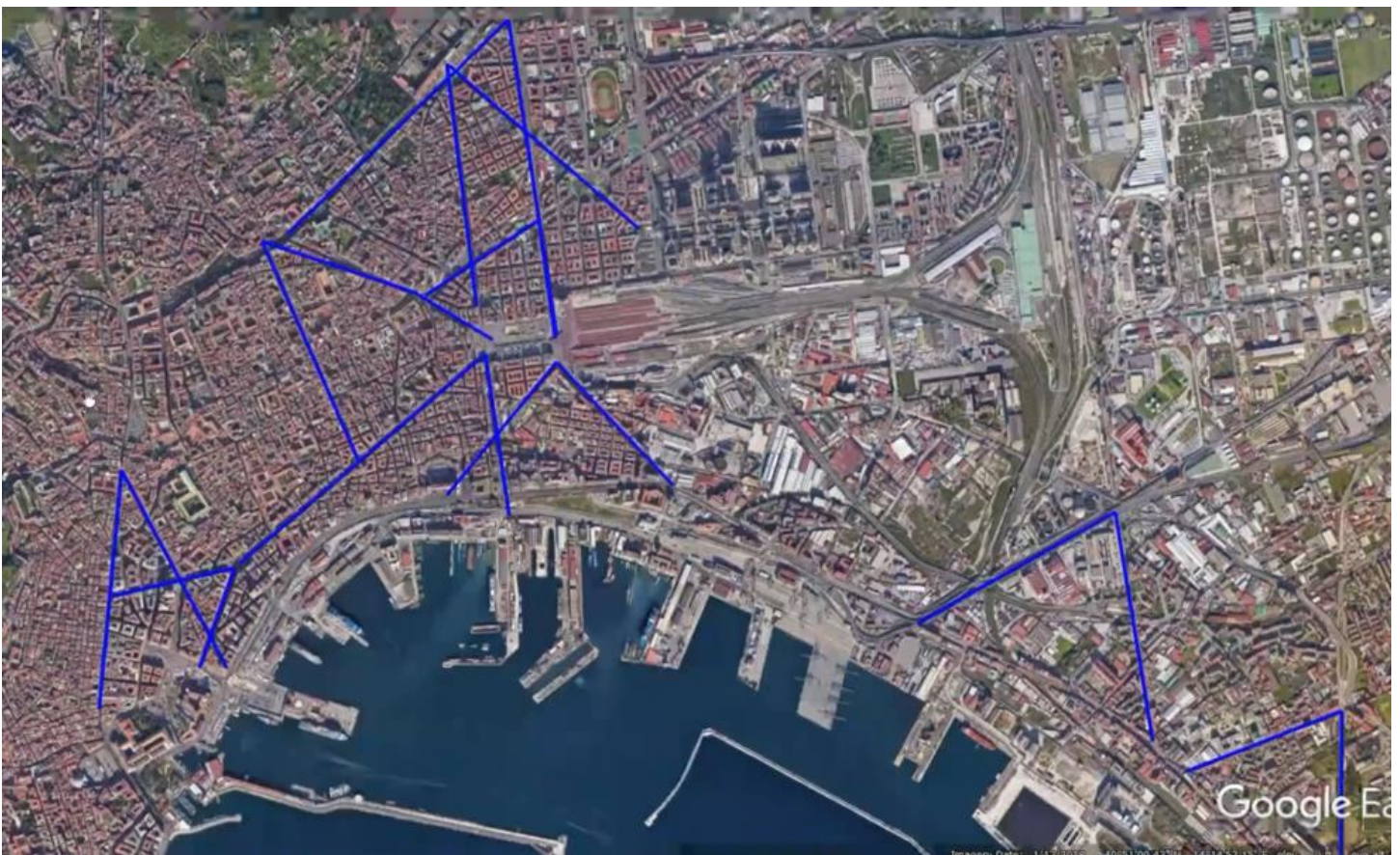
The Piazza della Repubblica and the Dogali Obelisk make a straight line that cuts through the Temple of Minerva Medica and leads all the way to the Piazza Nazionale in Naples.



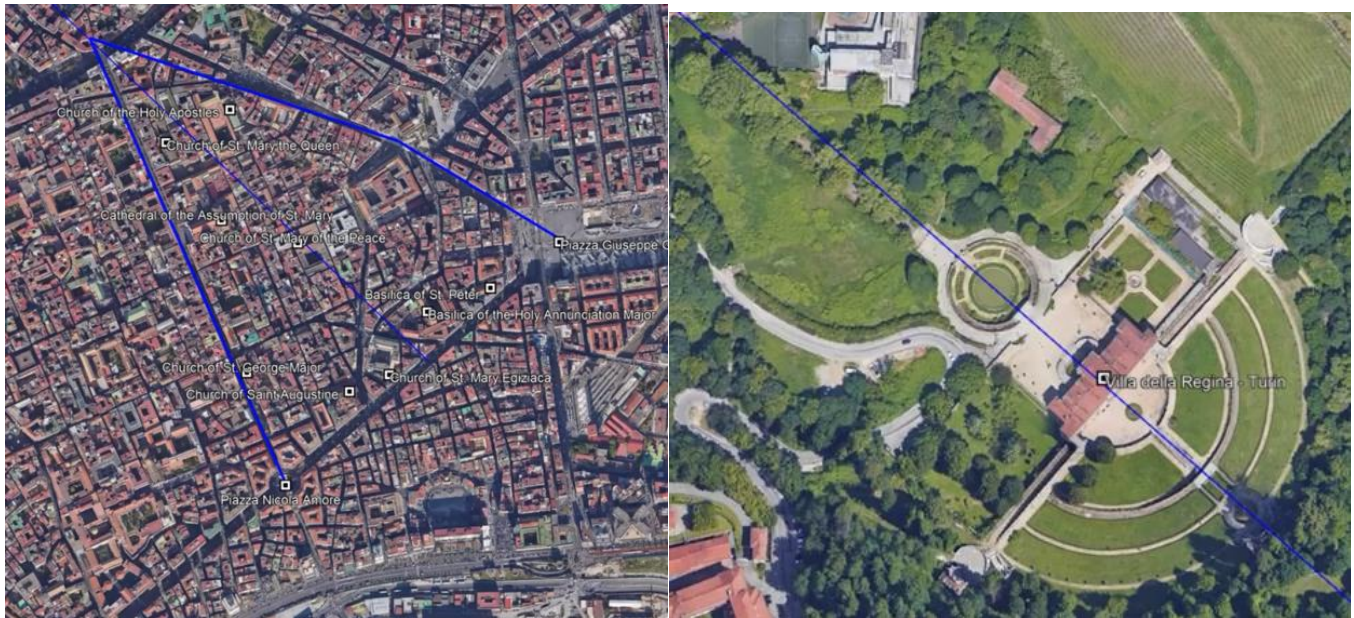


Piazza Nazionale - Naples

Naples is the second-most-populous metropolitan area in Italy and one of the main cultural centers of Europe.



These all point to something significant. Let's focus on one to make the point.



Villa della Regina – Turin



Palazzo Madama - Turin

Turin was the capital of the Kingdom of Piedmont-Sardinia and the original capital of Italy. This is where the Shroud of Turin is being kept.

The Royal Palace of Turin makes a line that connects to the Vatican Obelisk.



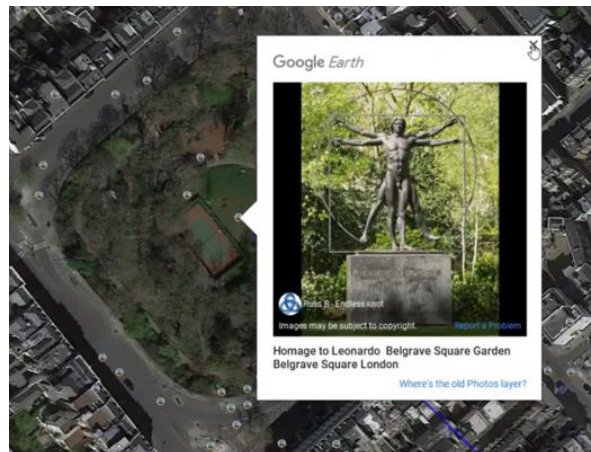
Royal Palace of Turin



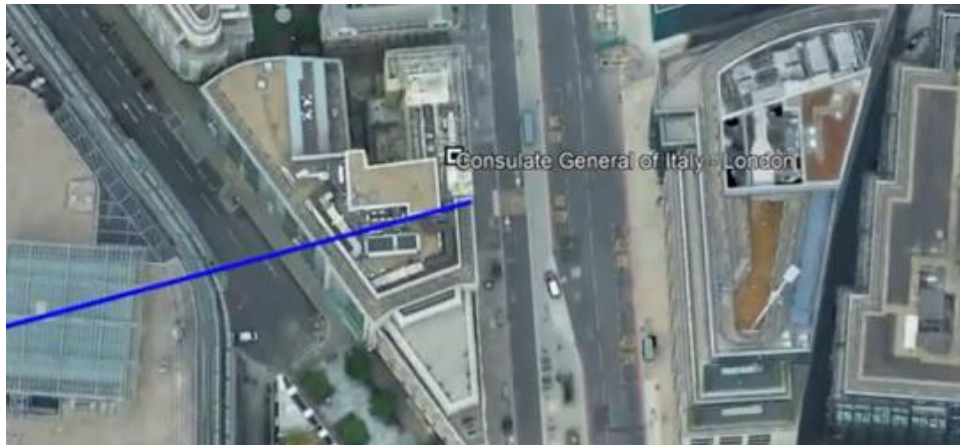
Milan is the most populous metropolitan area in Italy and the former capital of the Western Roman Empire. The Storzesco Castle and the Arch of Peace make a line that connects to the Piazza Firenze, which connects to two other places to form a figurative arrow.



This “arrow” points to Leonardo Belgrave Square Garden in London, UK.



Only 0.95 km away from this garden lies the Victoria Memorial, which makes an arrow that points to the Consulate General of Italy in London.



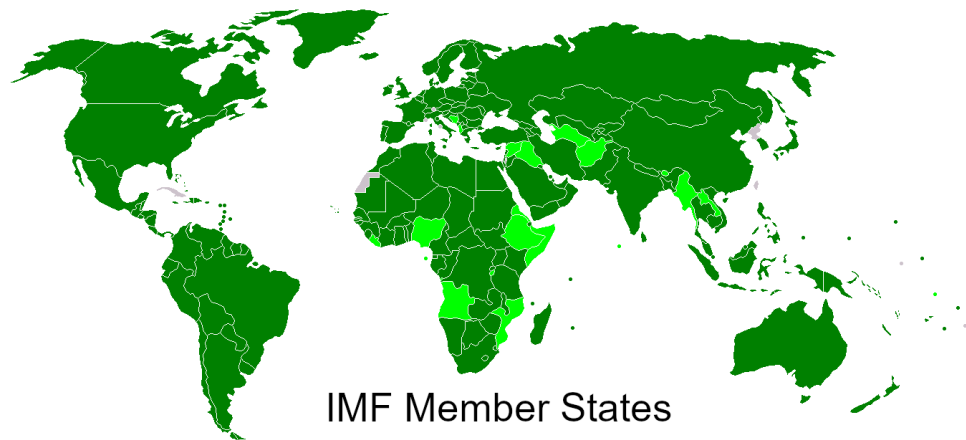
Consulate General of Italy, London

Can you imagine trying to parse this out? *Someone did.*



Biblioteca degli Alberi Milano, city park, Milan, Italy

This is barely even scratching the surface. Really, the *whole world* is the Zionist Empire, Babylon. That is the mystery.



[1 John 5:19] We know that we are of Elohim, and all the world lies in the wicked one.

[John 12:31] “Now is the judgment of this world, now the ruler of this world shall be cast out.”

[1 Corinthians 2:6-8] Yet we speak wisdom among those who are perfect, and not the wisdom of this age, nor of the rulers of this age that are being brought to naught. But we speak the wisdom of Elohim, which was hidden in a secret, and which Elohim ordained before the ages for our esteem, which no one of the rulers of this age knew, for if they had known, they would not have impaled the Master of esteem.



Jews took over the world's economy by the practice of usury. Usury is forbidden by the Law of Moses, so the Christians of Europe outlawed it, which gave Jews the monopoly on moneylending.

THE GROUP
RHODES-MILNER ROUND TABLE
- OXFORD -

House of Rothschild (1840)

LEAGUE OF JUST MEN (1897)

GREAT BRITAIN

HELL FIRE CLUB (1890)

BRITISH SOCIETY FOR PHYSICAL RESEARCH

LONDON SCHOOL OF ECONOMICS

BEA.S.T. COMPUTER

CLUB OF ROME

EUROPEAN COMMON MKT

TAVISTOCK INSTITUTE (THINK TANK)

WORLD PEACE COUNCIL (1958)

MI5

GRU

STUDENTS FOR A DEMOCRATIC SOCIETY

PROGRESSIVE LABOR PARTY

MAOIST

FABIAN SOCIALIST SOCIETY (1884)

NEW SCHOOL FOR SOCIAL RESEARCH

ROYAL INSTITUTE FOR INTERNATIONAL FAIRS (1911)

INSTITUTE FOR INDUSTRIAL DEMOCRACY (1961)

BRITISH LABOR PARTY

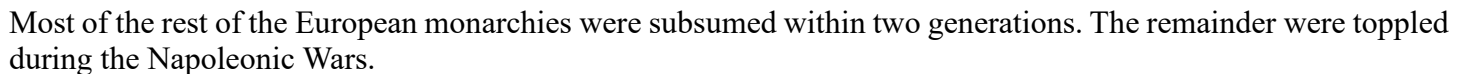
HELL FIRE CLUB

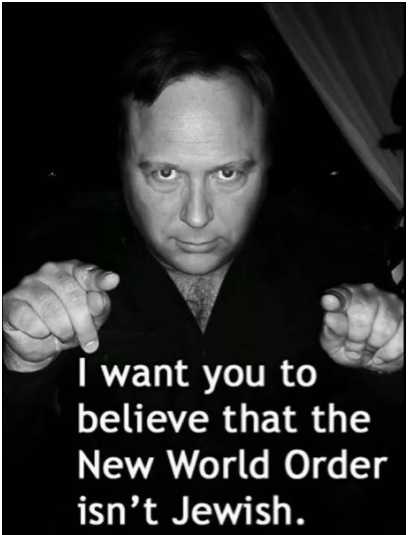
LEAGUE OF JUST MEN

GREAT BRITAIN

HOUSE OF ROTHSCHILD

- WORLD COUNCIL OF CHURCHES
- WOMEN'S INT'L LEAGUE FOR PEACE & FREEDOM
- NINTH ORGANIZATION FOR WOMEN
- SOUTHERN CHRISTIAN LEADERSHIP CONFERENCE
- COMMITTEE FOR ECONOMIC DEVELOPMENT
- CORE • FORD FOUNDATION
- FUND FOR THE REPUBLIC
- NAT'L URBAN LEAGUE • NEA





Alex Jones, host of InfoWars.com

Jews still control the world's financial systems.



Jews control the world's political systems.



Jews control the mass media.





The New York Times Ochs-Sulzbergers (Owners) Arthur Sulzberger (Publisher) Mark Thompson (Editor in Chief)	The Washington Post Eugene Meyer (Bought in 1933) Meyer-Graham Family (Managers) Marty Barron (Editor in Chief)	HUFFPOST Ken Lerer (Co-Founder) Jonah Peretti (Co-Founder) Lydia Polgreen (Editor-in-Chief)	theguardian Anthony Salz (Rothschild Rep.) David Pemsel (CEO) Katharine Viner (Editor-In-Chief)
The Economist Owned by Rothschild Family Eli Goldstein (Board Director)	BBC Marcus Agius (Board, Rothschild) Danny Cohen (Director) Ian Katz (BBC Newsnight)	Vox Ezra Klein (Co-Founder, Editor) Matthew Iglesias (Co-Founder)	BuzzFeed Jonah Peretti (CEO) Ken Lerer (Co-Founder) Ben Smith (Editor in Chief)

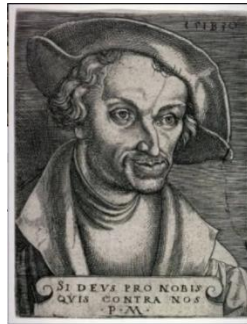


But what about the world religions? That depends. Is your religion a manmade institution? Then is it “of the world.”





Two of the three main instigators of the Reformation in Germany were crypto-Jews.



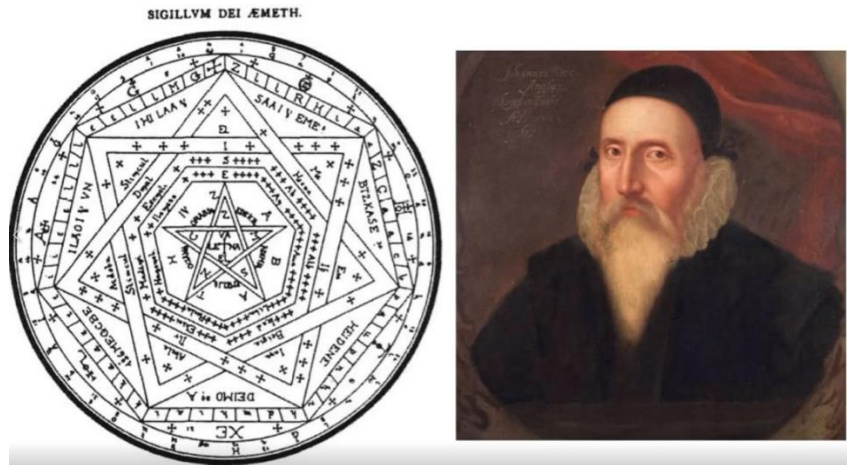
Philipp Schwartzertdt
a.k.a. Philip Melancthon



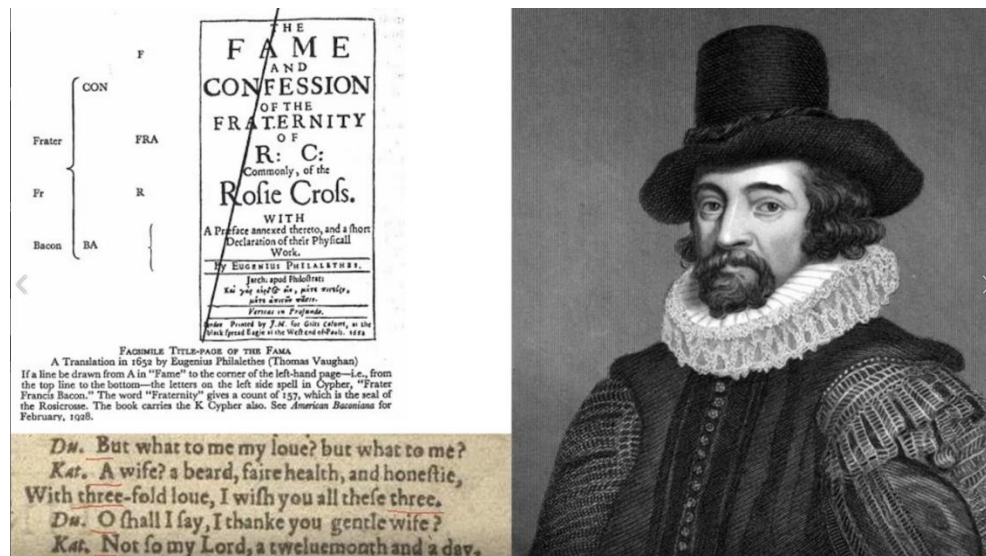
Jean Cohen
a.k.a. John Calvin



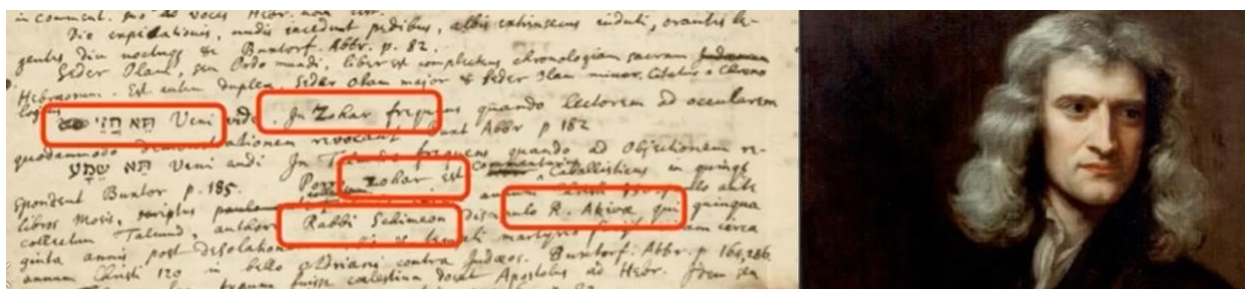
The scientific revolution in Britain was led by men who openly practiced Kabbalah.



John Dee



Sir Francis Bacon



Sir Isaac Newton

Siddhartha Gautama (a.k.a. the Buddha) was an exilarch.

“Keepers” (of the Torah)

Hebrew: shamerim
Sanskrit: Śramaṇa
English: Samaritans

Everyone who was involved in the creation of Islam was Jewish, including both the Shia and Sunni sects.

The House of Saud is Jewish. The founder of the Wahhabi sect was Jewish. Other *dönme* Jews include the rulers of Jordan and Turkey.



Usama Bin Laden at age 15 with 22 of his siblings



Mayer Amschel Bauer
a.k.a. Mayer Rothschild



The New World Order is a mere perversion and a cheap knockoff of the reign of the heavens, insignificant against the rule and order of the cosmos. God made the whole universe with perfect precision and harmony; mortal Man can't even fathom it.

God determined the exact placement and measurements of the building which housed the Ark of his Covenant with Israel (Ezekiel 43:12-17; 1 Chronicles 28:11-19).

Hebrew נֹחַ (*noakh*): rest, home, temple

Greek ναῦς (*naus*): ship

Greek ναός (*naos*): temple, sanctuary; Holy of Holies

This is the origin of the terms 'nautical,' 'navy,' 'navigation,' etc. The nautical mile is the arc of navigation centered on Jerusalem.

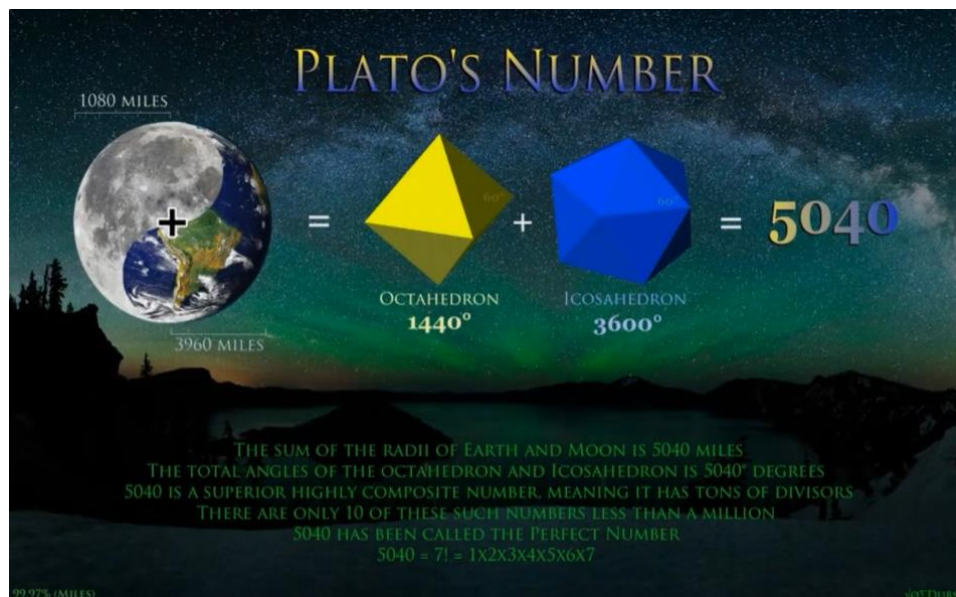
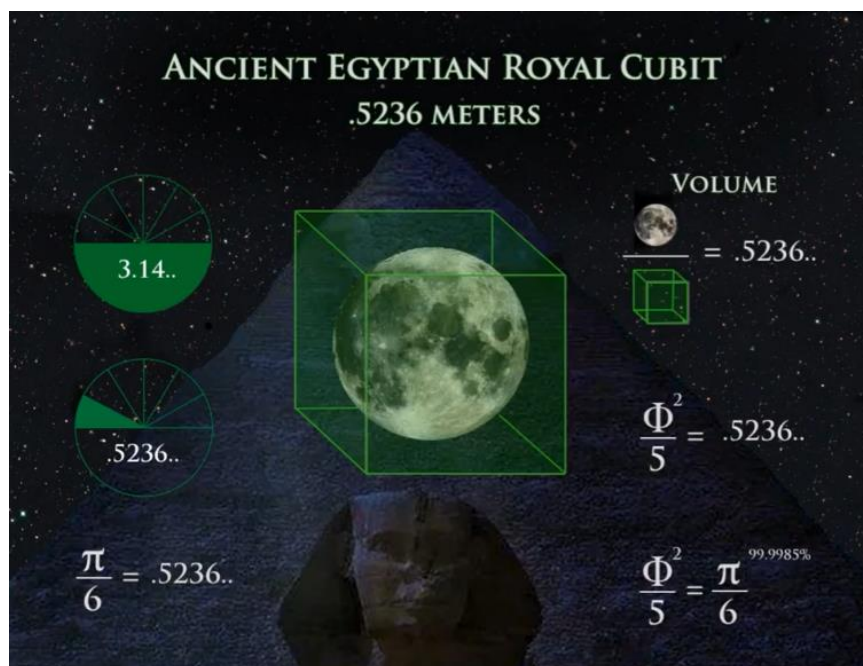
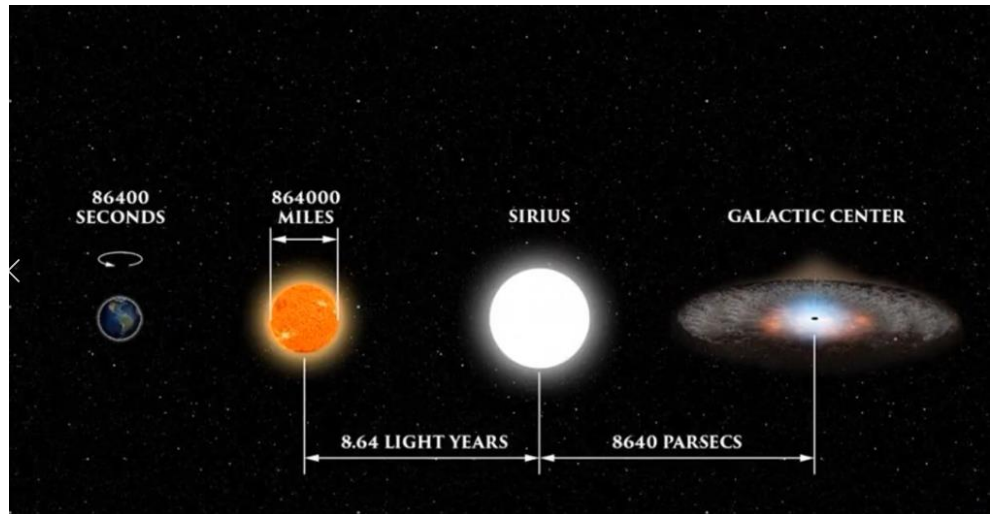
The common cubit is 21.60 inches. 21.60 is a fractal of 21,600, the circumference of Earth in nautical miles (360 degrees \times 60 minutes).

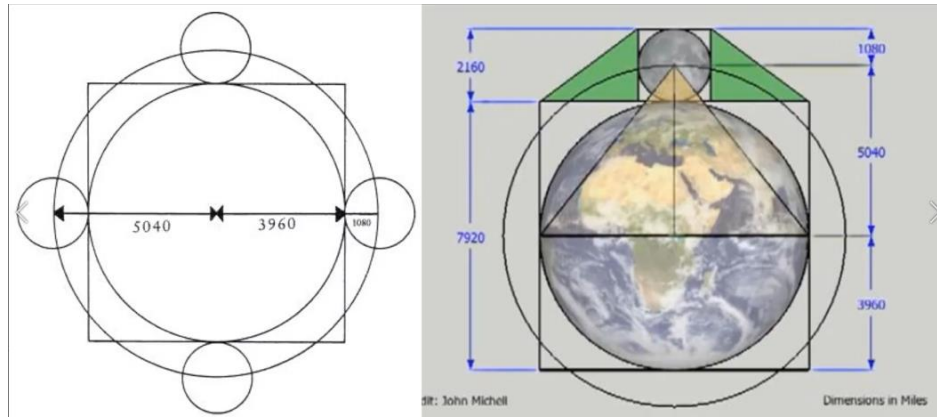


The sacred cubit is 25.20 inches. The statute mile is based on the sacred cubit which was used in the design of the Temple in Jerusalem. 25.20 is sacred as a fractal of 2520, the product of 7 (the number of completion) and 360 (the number of degrees in a circle).

2520 is also half of 5040, “the greatest order of all numbers” according to Plato.

7! or $(1 \times 2 \times 3 \times 4 \times 5 \times 6 \times 7) = 5040$



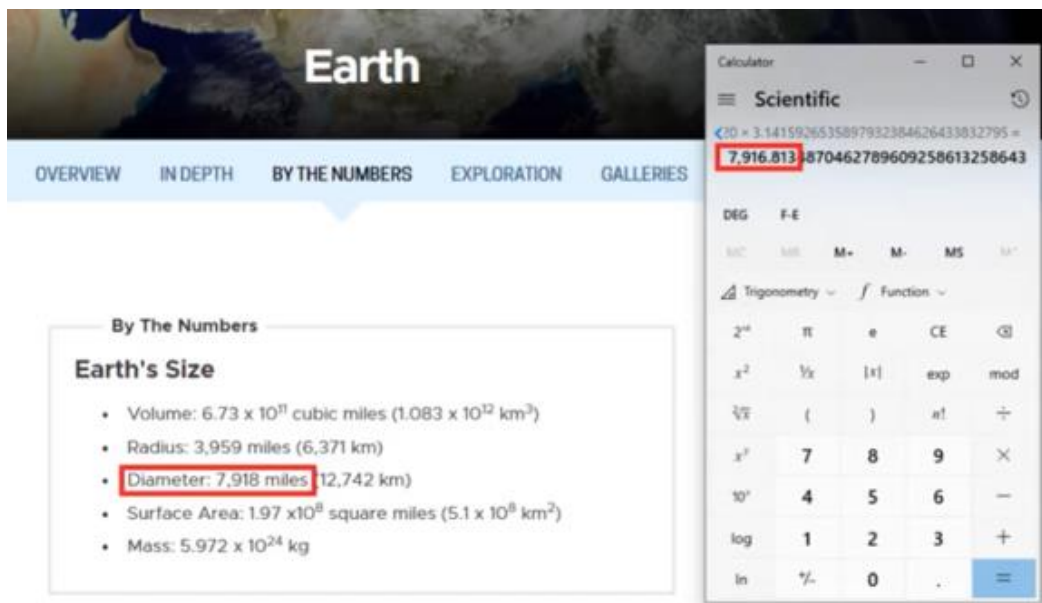


The Temple was placed at 2520 feet above sea level. (Hint: It wasn't located where everyone thinks it was.)



740 m (2,430 ft)

The diameter of Earth is $2520 \times \pi$ in statute miles.



Diameter: 7,918 miles, Calculator: 7,916.813

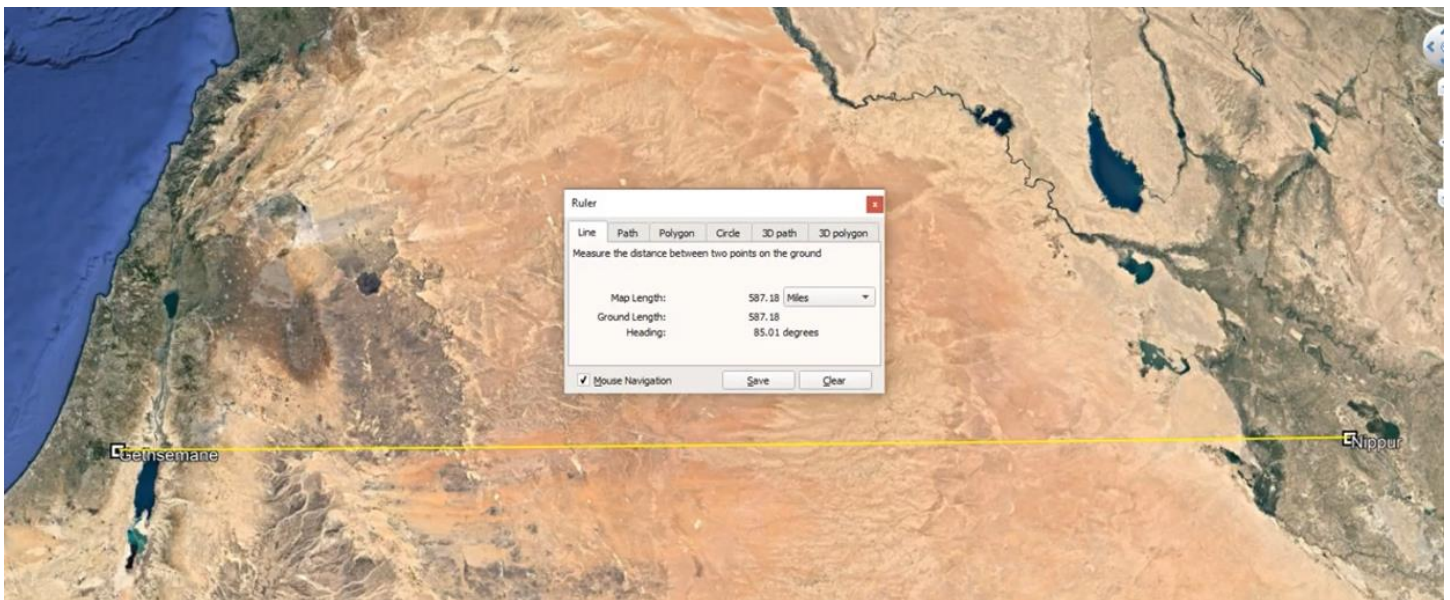
The apogee of the moon is about 252,000 statute miles (2520×100).

Eratosthenes measured Earth's circumference at 250,000 stadia by calculating the degrees between Syene and Alexandria. He was only 287 miles short. The distance from Syene to Alexandria is 5040 stadia.

Statute miles have prophetic significance before the time of Christ (BC). Nautical miles have prophetic significance since the time of Christ (AD).



The Babylonians captured Jerusalem in 587 BC. Nippur is 587 statute miles from Jerusalem.



Babylon was captured by the Persians in 539 BC. Babylon is 539 statute miles from Jerusalem.



[Revelation 13:18] Here is the wisdom! He who has understanding, let him calculate the number of the beast, for it is the number of a man, and his number is 666.

The Ka'aba in Mecca is 666 nautical miles from the Temple.



The holiest sites of the Babylon religions have been built to house objects which fell from the sky.



Ka'aba Stone, Mecca

The aligning of sites demonstrated here dates back to the time of the Watchers. For instance:



These ruins point to the Osirion



The Osirion points to the Antediluvian Palace



The Antediluvian Palace points to the National Museum in Rome



National Museum – Rome

[Revelation 2:9] “I know your works, and pressure, and poverty – yet you are rich – and the blasphemy of those who say they are Yehudim and are not, but are a congregation of Satan.”



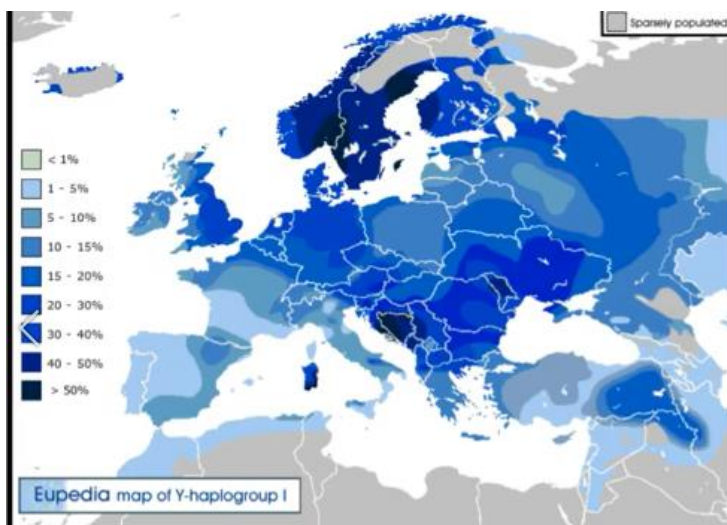
Recall that this is the succession of civilizations which have ruled over Palestine.



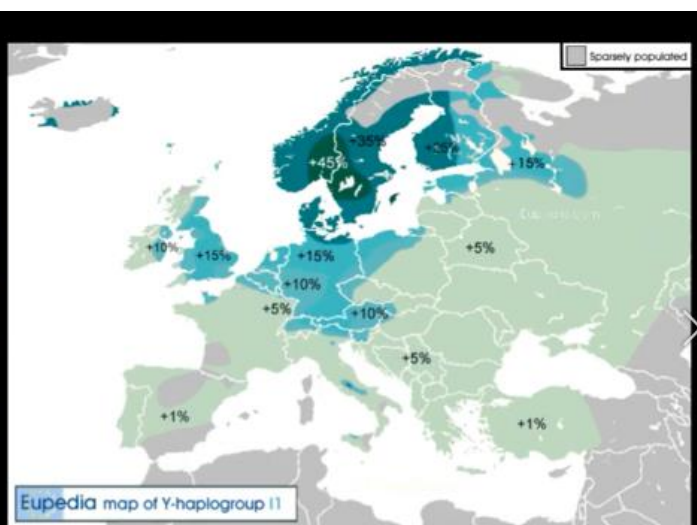
The people who rule Palestine now are Ashkenazi Jews: Turkic Babylonian exiles from Central Asia. They have written themselves out of this narrative as part of a conspiracy to convince Christians that they are exclusively God's chosen people, the nation of Israel.

In other words, they have stolen the identity of Israel and have secured the blessing of the true Israel, just as Jacob stole the birthright from Esau.

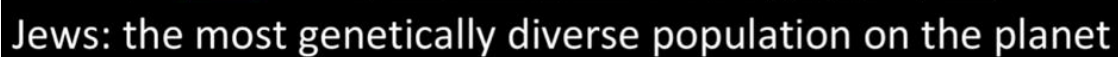
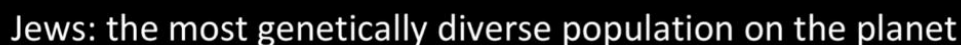
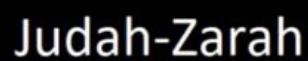
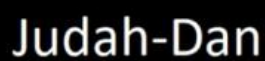
[Deuteronomy 7:3] "And do not intermarry with them – you do not give your daughter to his son, and you do not take his daughter for your son."

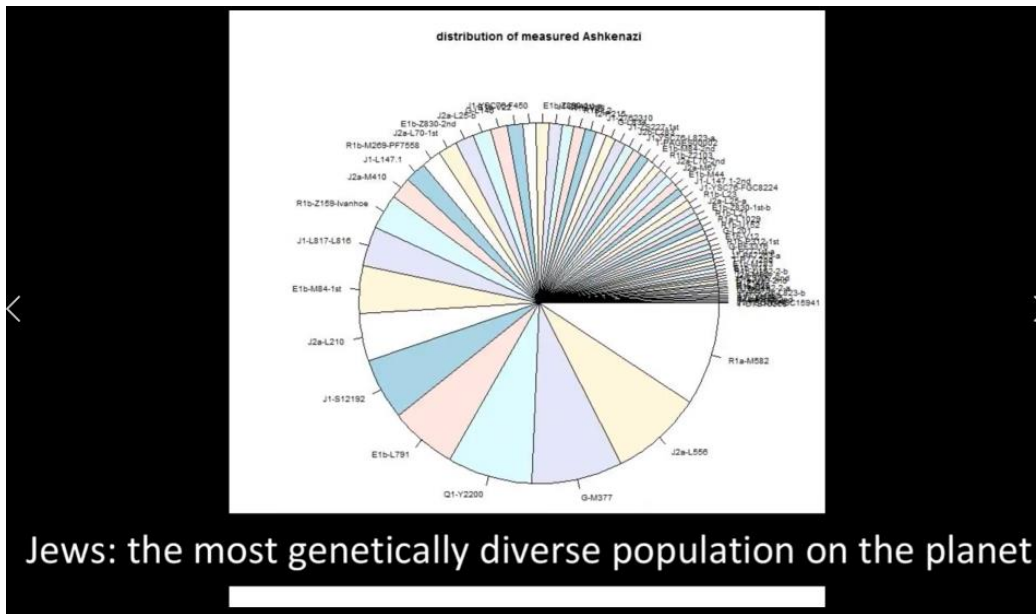


Israel



Dan





As long as the world continues to go along with the fraud, it is under the control of Satan. The only way to break the chains of slavery is to restore Yahshua to his throne.



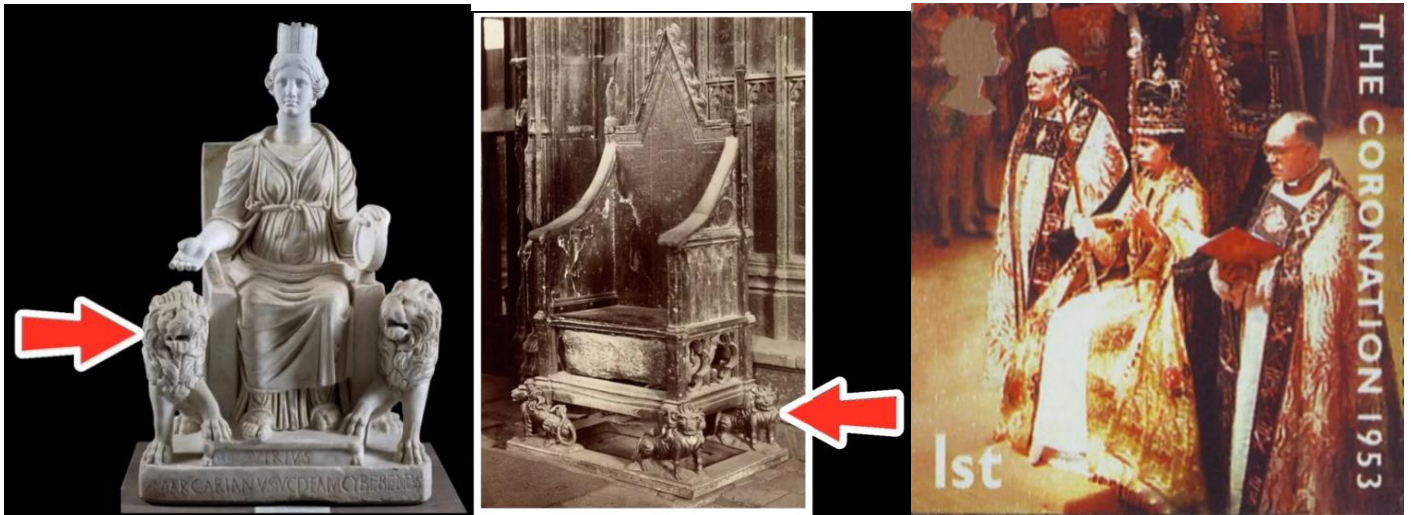
The crypto-Jewish royal family of Great Britain has claimed the Throne of David. Their claim is authenticated by an ancient coronation ritual using the Stone of Scone.



[Revelation 3:9-11] "See, I am giving up those of the congregation of Satan, who say they are Yehudim and are not, but lie. See, I am making them come and worship before your feet, and to know that I have loved you. Because you have guarded My Word of endurance, I also shall guard you from the hour of trial which shall come upon all the world, to try those who dwell on the earth. See, I am coming speedily! Hold what you have that no one take your crown."



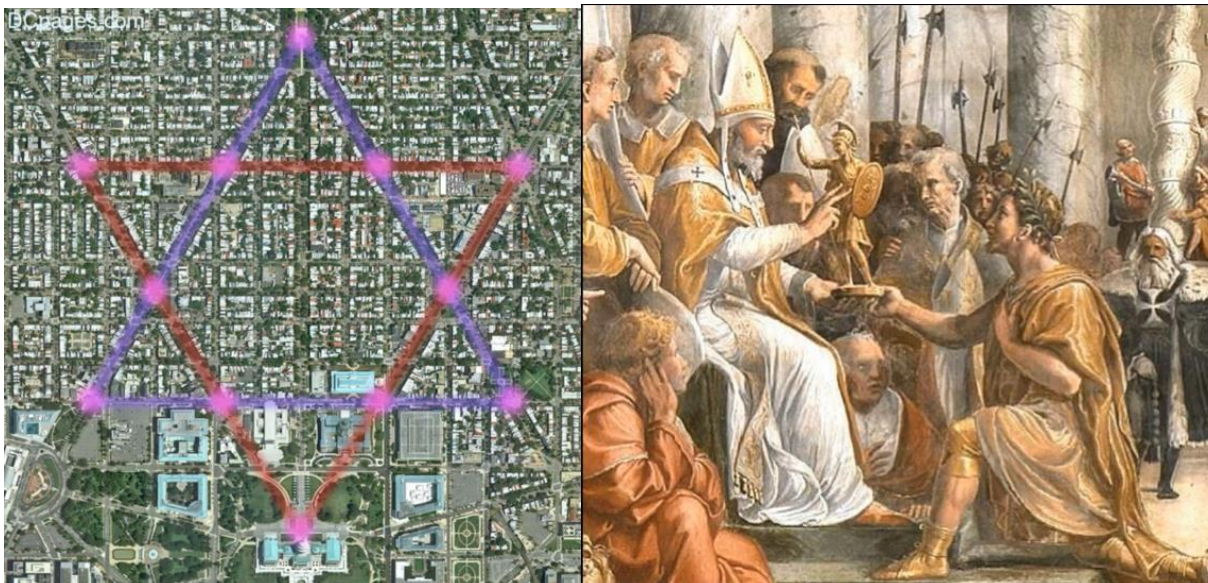
Do you see it now?



“Why did you marvel? Let me explain to you the secret of the woman and of the beast she rides.”

“Why did you marvel? Let me explain to you the secret of the **Church** and of the **New World Order**.”





Washington D.C.

A cathedral is the place which houses the throne of a bishop.

Greek: καθέδρα (*kathédra*)

Latin: *cathedra*

St. Edward's Chair is the Throne of Ishtar, not the Throne of David. Nimrod claimed the authority of Ishtar, his "mother."

When Queen Elizabeth I made herself the supreme authority of the Church of England, she declared herself the "virgin queen" to replace Mary as the object of her subjects' veneration. But the global Illuminati were never going to let a woman sit on the Throne of Nimrod.

The Stone of Scone was stolen in 1950, and "returned" in 1951, just prior to the coronation of Queen Elizabeth II. The public has no idea where the real stone is.



Only the *nasi* (prince) of the Jews can sit on the throne of Babylon the Great—the Maitreya of Buddhist and New Age eschatology or the Antichrist of Christian eschatology. (If you want to know what happened to the Stone of Scone, follow the title.)



The Jews revolted against the Roman Empire in 115 AD and savagely butchered millions of innocent people. The Romans killed the rebels and relegated the Jews to Palestine and Persia. Within 15 years the province of Judea was in open rebellion again. Jews proclaimed the leader Simon bar Kokhba as the Messiah. This time the rebellion was utterly crushed. The survivors fled to Persia and Arabia.



Jewish scholars later refuted their notion that Simon bar Kokhba was the Messiah, simply because he failed to lead them to victory against the Romans. Nevertheless, they elected exilarchs to succeed him for another 500 years, inventing the rabbinic myth of the “Four Messiahs,” exilarchs who would sequentially restore them to rule in the Holy Land.

The Four Messiahs:

Messiah ben David (the King)
 Messiah ben Joseph (or ben Ephraim)
 Elijah (the Prophet)
 Melchizedek (the Righteous Priest)



The Four Messiahs [the reality]:

Simon bar Kokhba
 Nehemiah ben Hushiel
 Muhammad
 The Mahdi

See, I tell you a mystery:

Yahshua is the Messiah of the Bible.
 Muhammad is the Messiah of Judaism.
 The Mahdi is the Messiah of Islam.

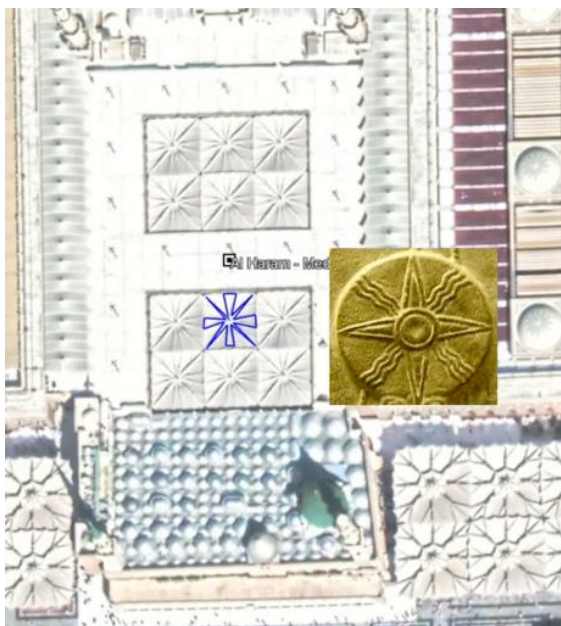


Ka'ba Stone, Mecca

Islam is simply another iteration of rabbinical Judaism, which the Jews have lost control of. But it was still originally part of the same Babylonian system.

“And as you saw iron mixed with muddy clay, they are mixing themselves with the seed of men, but they are not clinging to each other, even as iron does not mix with clay.”

Many of the Jews who were driven out of Palestine settled in present-day Yemen, around the city of Sana'a. They also built Mecca and Medina in the Hijaz. The cult of the Jewish moon god Hubal (a.k.a. Allah) was established at Mecca by an exilarch named Amr ibn Luhayy.



Al Haram, Medina

Muhammad was in line to become a priest of the Hubal cult, but his claim was disputed and he fled to Medina, where he was made the successor of the previous exilarch (Nehemiah ben Hushiel, a.k.a. Messiah ben Joseph).

The Ka'aba points to the Great Mosque in Sana'a.



Great Mosque – Sana'a

The Jewish caliphs used the native Arab population to weaken the Roman and Persian Empires in order to eventually recapture Jerusalem. When their treachery was exposed, they lost most of their influence.

The Great Mosque connects to the Temple Mount in a straight line.



The Dome of the Rock was built on the Temple Mount and the Golden Gate was sealed to prevent the return of another Jewish Messiah from Babylon.

The Temple Mount connects in a straight line eastward to Esfahan, Iran, and said line cuts through the ruins of Babil, Iraq (Babylon).



Babil (Babylon)

The major Jewish settlement in Persia from the time of the Babylonian Exile was located in Esfahan. As they weren't able to coordinate with other nations, the building projects in the Middle East were imprecise until recently.

Now that the crypto-Jews have gained hegemony again, however...



Sheikh Lotfollah Mosque, Esfahan, Iran



King Saud University Grand Mosque, Riyadh, Saudi Arabia

Riyadh is the capital and largest city of Saudi Arabia. The King Saud University Grand Mosque makes a line that stretches to the Royal Palace and Campo del Moro of Madrid, Spain, and cuts through Nakhil Park in Riyadh.



Nakhil Park, Riyadh



Royal Palace and Campo del Moro in Madrid, Spain

Madrid is the capital of Spain and the second-largest city in the European Union.

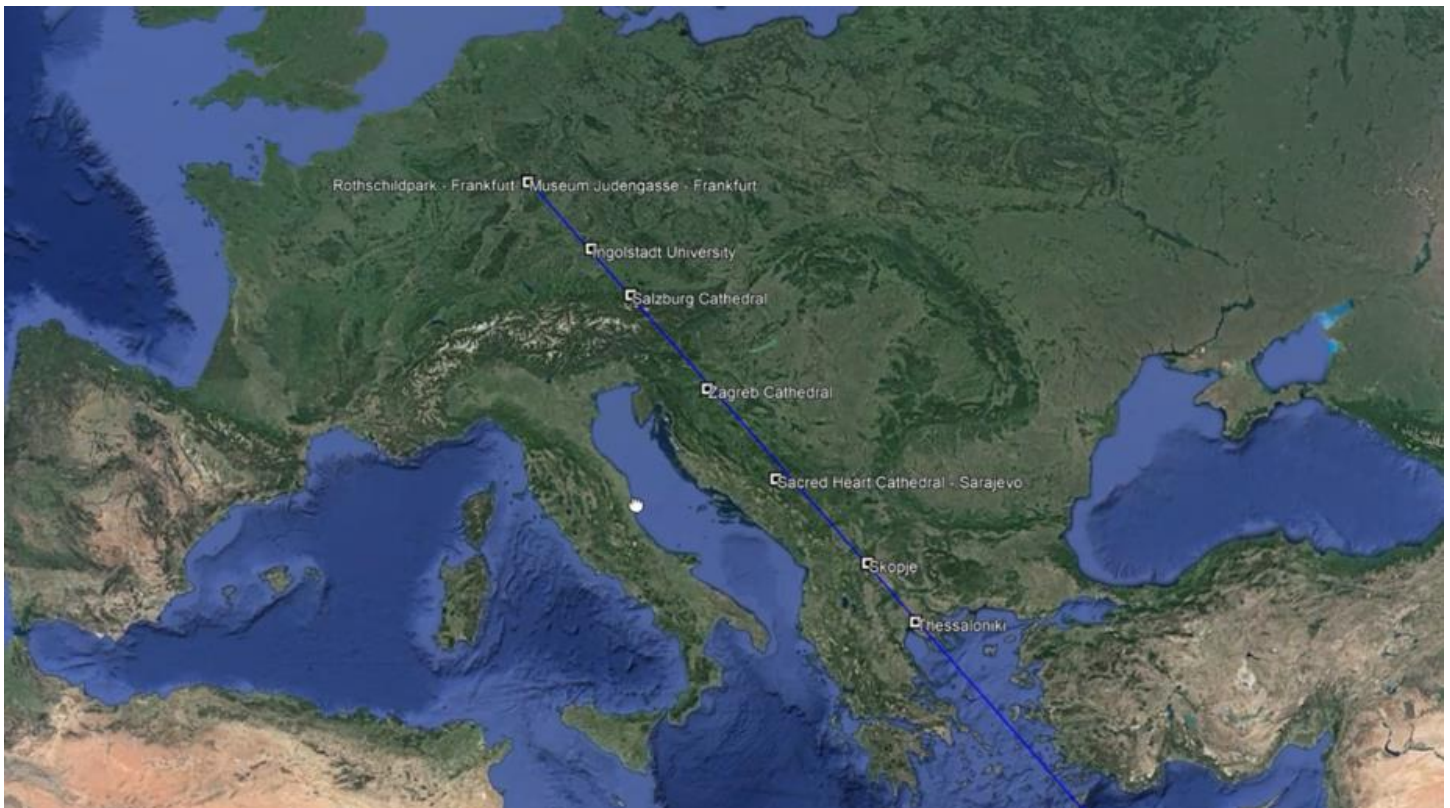
A rabbi named Sabbatai Zevi was proclaimed the Messiah in 1666 but was forced to convert to Islam. His followers, called Sabbateans, were initially forced underground by other Jews.

Sabbateans include:

- Dönme (crypto-Jews of the Ottoman Empire)
- Hasidic Jews
- The Illuminati



Ka'aba Stone, Mecca



From bottom to top:

Thessaloniki, the “co-capital” of the Byzantine Empire

Skopje, the capital of North Macedonia

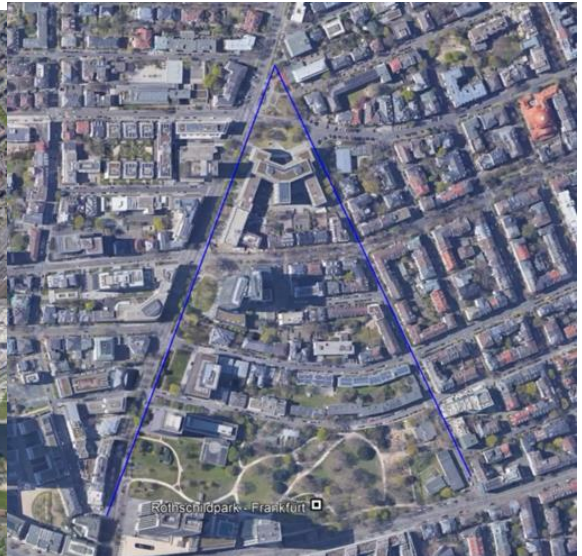
Sacred Heart Cathedral, Sarajevo, the capital of Bosnia and Herzegovina

Zagreb Cathedral, Zagreb, capital of Croatia

Salzburg Cathedral, Ingolstadt University, and Rothschild park – Frankfurt are Bavarian Illuminati strongholds



Museum Judengasse – Frankfurt



Rothschild Park, Frankfurt, Germany



THE STAR OF REMPHAN

Acts 7:43

6 POINTS

6 TRIANGLES

6 SIDES

The role of the “chosen people” is not to teach the whole world to sin, but to teach it not to—to obey the Law of God.

Jewish leaders push for Islamization of Europe



"Jews should rejoice at the fact that Christian Europe is losing its identity as a punishment for what it did to us for the hundreds of years we were in exile there... And now, Europe is losing its identity in favor of another people and another religion... Even if we are in a major war with the region's Arabs over the Land of Israel, Islam is still much better as a gentile culture than Christianity." ~ Rabbi Baruch Efrati, 2012



"The Messiah will come when Edom, Europe, Christianity has totally fallen. So I ask you: Is it good news that Muslims are coming to Europe? It's excellent news! It means the coming of the Messiah! Excellent news!" ~ Rabbi Rav Touitou, 2013



"We, the Green party, have to make sure to get as many immigrants as possible into Germany. If they are in Germany, we must fight for their right to vote. When we reach that, we will have a share of the vote, we need to change this republic." ~ Daniel Cohn-Bendit, Jewish Co-president of EFA

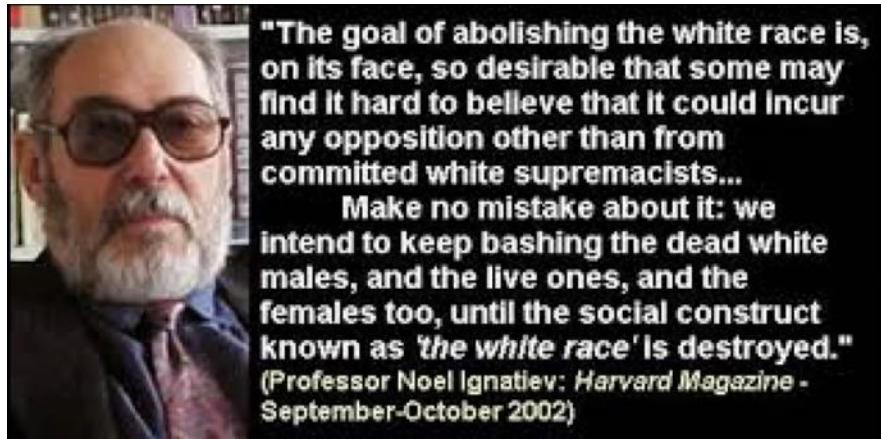


"Europe has not yet learned how to be multicultural. We are going to be part of the throes of that transformation which must take place. They are now going into a multicultural mode and Jews will be resented because of our leading role." ~ Jewish founder of Paideia, Barbara Lerner Spectre

Jews have contributed much to the world. For instance:

- the Trans-Atlantic slave trade (both African and Irish)
- racial tension
- White genocide
- the Armenian Holocaust
- usury, compound interest
- fractional reserve banking
- Communism, socialism
- Satanism, atheism
- Luciferianism, Illuminism
- international narcotics trafficking
- pornography
- Muslim extremism
- three world wars
- nuclear weapons
- genetic engineering

The only way to correctly understand the world the way it is, is to interpret everything as an extension of the Zionists' war against the rest of humanity.



I've only shown you a fraction of the whole. [Babylon] is everywhere you look.



The kingdom of heaven is the removal of the New World Order from Earth.

[Matthew 21:20-21] And the taught ones, seeing it, marvelled, saying, "How did the fig tree wither so soon?" And יהושע answering, said to them, "Truly, I say to you, if you have belief and do not doubt, you shall not only do what was done to the fig tree, but even if you say to this mountain, 'Be removed and be thrown into the sea,' it shall be done.

[Revelation 8:8] And the second messenger sounded, and what looked like a great mountain burning with fire was thrown into the sea, and a third of the sea became blood.



Operation Dark Winter

From Wikipedia, the free encyclopedia



This article **needs additional citations for verification**. Please help improve this article by adding citations to reliable sources. Unsourced material may be challenged and removed.
Find sources: "Operation Dark Winter" – news · newspapers · books · scholar · JSTOR (November 2010) (Learn how and when to remove this template message)

Operation Dark Winter was the code name for a senior-level bio-terrorist attack simulation conducted on June 22–23, 2001.^{[1][2]} It was designed to carry out a mock version of a covert and widespread smallpox attack on the United States. Tara O'Toole and Thomas Inglesby of the Johns Hopkins Center for Civilian Biodefense Strategies (CCBS)[ⓘ] / Center for Strategic and International Studies (CSIS)[ⓘ], and Randy Larsen and Mark DeMier of Analytic Services were the principal designers, authors, and controllers of the Dark Winter project.

Contents [hide]
1 Overview
1.1 Objective
1.2 Scenario
2 Summary of findings
3 Key participants
4 In popular culture
5 See also
6 References
7 External links

Operation Dark Winter
Location
Andrews Air Force Base, Maryland
U.S.
Date
June 22, 2001 – June 23, 2001

Overview [edit]

Objective [edit]

Dark Winter was focused on evaluating the inadequacies of a national emergency response during the use of a biological weapon **against the American populace**. The exercise was intended to establish preventive measures and response strategies by increasing governmental and public awareness of the magnitude and potential of such a threat posed by biological weapons.

Scenario [edit]

Dark Winter's simulated scenario involved an initial intentional smallpox attack on *Washington, D.C.*, with additional smallpox attack cases in *Georgia* and *Denniscourt*. The simulation was then designed to spiral out of control. This would create a

“Dark Winter was a code name for a senior-level bio-terrorist attack simulation”
“...against the American populace”

[Matthew 9:35] And יהושע went about all the cities and villages, teaching in their congregations, and proclaiming the Good News of the reign, and healing every disease and every bodily weakness among the people.

[Matthew 24:14] And this Good News of the reign shall be proclaimed in all the world as a witness to all the nations, and then the end shall come.

By claiming that a tripe explanation of history is interpreting prophecy, Christian ministers set themselves up as false prophets, because a prophet is one who both understands and interprets.

The true spirit of prophecy reveals much more than this. It reveals *all*.

[1 John 2:19-22] They went out from us, but they were not of us, for if they had been of us, they would have stayed with us – but in order that it might be made manifest that none of them were of us. And you have an anointing from the Set-apart One, and you know all. I did not write to you because you do not know the truth, but because you know it, and because no falsehood is of the truth. Who is the liar, except the one denying that יהושע is the **Messiah***? This is the anti-messiah, the one denying the Father and the Son.

*anointed one, sovereign

[Deuteronomy 18:18-19] ‘I shall raise up for them a Prophet like you out of the midst of their brothers. And I shall put My Words in His mouth, and He shall speak to them all that I command Him. And it shall be, the man who does not listen to My Words which He speaks in My Name, I require it of him.’



So now you know:

The New World Order is Babylonian, Persian, Judaic, Hellenic, Roman.

It is Pagan, Jewish, Islamic, Catholic, Orthodox, Protestant, Masonic.

It is ancient, global, Antichrist, and *it is here*.

